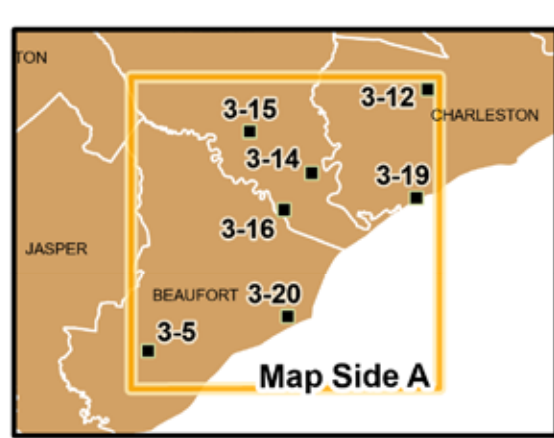


- ### LEGEND
- Specific Named WMA
  - Other Unnamed WMA
  - Other Protected Land
  - Heritage Preserve
  - Moultrie Hunt Unit Division
  - Francis Marion WMA Boundary
  - Safety Zone/No Hunting
  - No Trespassing
  - Check Station
  - Archery Only
  - Bird Dog Training Area
  - Dove Field
  - Dove Field / Bird Dog Training
  - Youth Hunt Only
  - Quail Hunting
  - Kiosk
  - Hunter Sign In
  - Kiosk/Dove Hunter Sign In
  - Kiosk/Hunter Sign In
  - Camping - Big Game Hunts
  - Camping - Primitive
  - Camping - Seasonal
  - Camping W/ Facilities
  - Rifle Range
  - Archery Range
  - Public Boat Ramp
  - Game Zones

#### LIMITED SUNDAY OPPORTUNITIES AVAILABLE

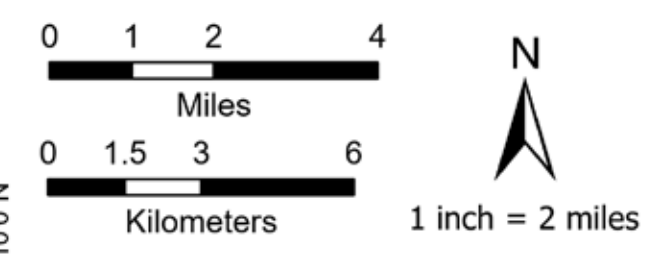
Hunting will be allowed on Sundays between October 15 and January 31 for those species in season on Edisto River WMA, Webb WMA, Palachuola WMA, Hamilton Ridge WMA, Liberty Hill WMA, Belfast WMA, Woodbury WMA, Sumter National Forest, and Francis Marion National Forest. See regulations for specific WMAs for additional restrictions. Deer hunts on Webb WMA, Palachuola WMA, and Hamilton Ridge are conducted through the Public Lottery Hunts Program.

- Sumter National Forest
- Liberty Hill WMA
- Belfast WMA
- Woodbury WMA
- Francis Marion National Forest
- Edisto River WMA
- Hamilton Ridge WMA
- Webb WMA
- Palachuola WMA



A Wildlife Management Area Permit is required to hunt on WMA lands. WMA boundaries shown are approximate and should be marked with these yellow signs.

Beaufort and Colleton County Check Stations			
15	Donnelley WMA	During scheduled hunts only.	Hunters must register.
16	Bear Island WMA	During scheduled hunts only.	
Botany Bay HP/ WMA Check Stations			
17	Botany Bay HP/WMA	During scheduled hunts only.	



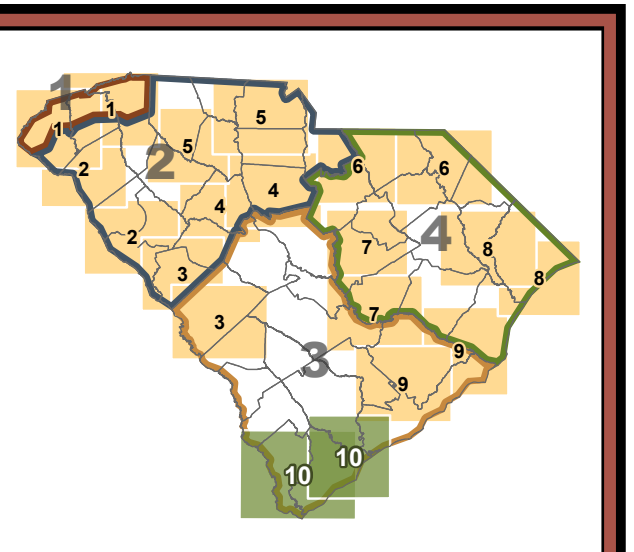
NOT FOR SALE  
www.dnr.sc.gov

**SCDNR**  
Live Life  
Outdoors

3-5 Victoria Bluff HP  
3-12 Dungannon HP  
3-15 Donnelly  
3-16 St. Helena Sound HP  
3-18 Turtle Island  
3-19 Botany Bay Plantation  
3-20 Old Island HP  
3-21 Palachuola  
3-22 Webb  
3-23 Hamilton Ridge  
3-24 Tiltman Sand Ridge HP

### Wildlife Management Area Map #10

REV. JULY 2023



Game Zone	Wildlife Management Area Maps									
	1	2	3	4	5	6	7	8	9	10
1	X									
2	X	X		X	X	X				
3			X				X		X	X
4						X	X	X	X	

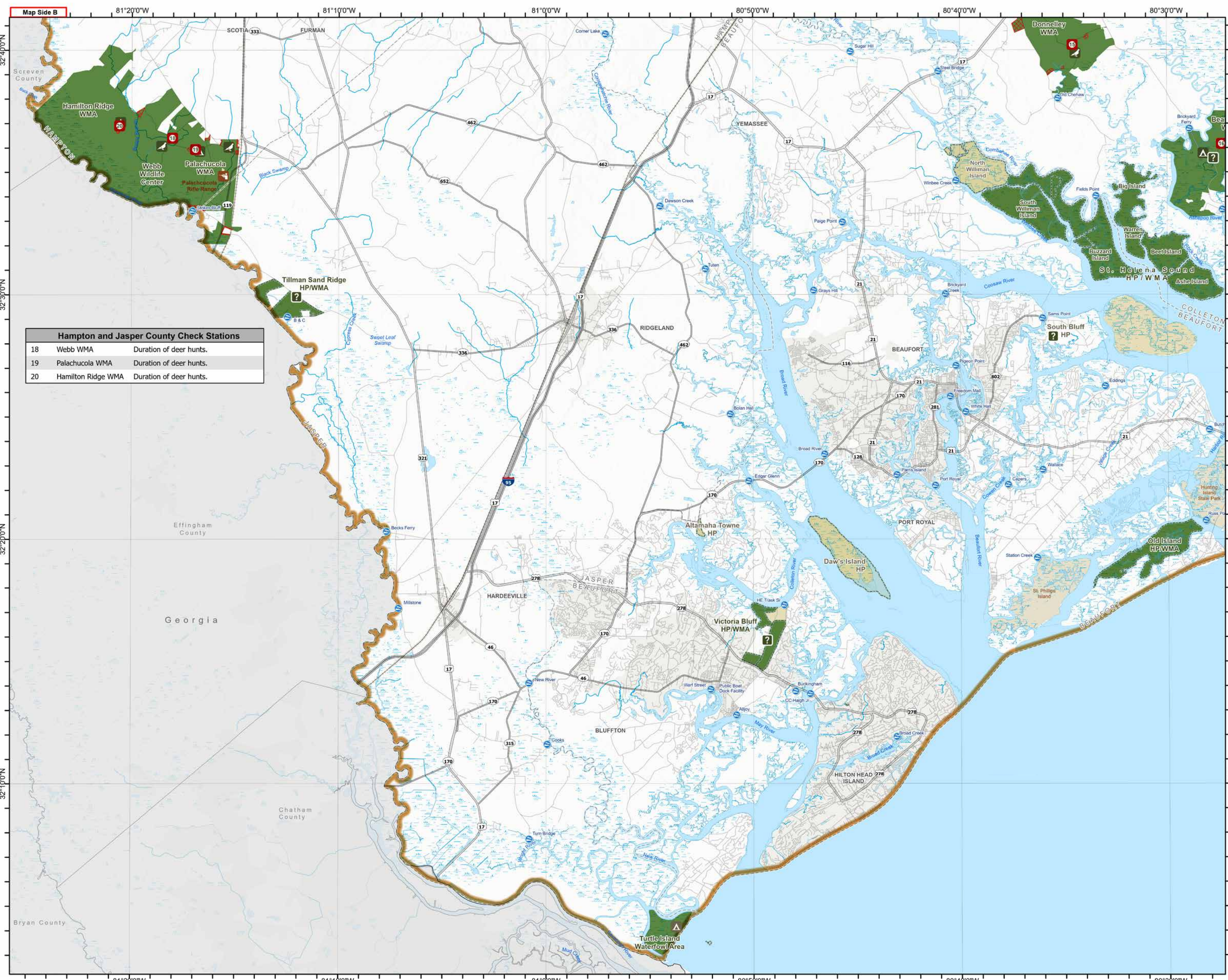
When requesting additional maps, please use the chart and map above to make your choice. You may also visit our website for additional information.

[www.dnr.sc.gov/wma/maps.html](http://www.dnr.sc.gov/wma/maps.html)

The South Carolina Department of Natural Resources prohibits discrimination on the basis of race, color, gender, national origin, disability, religion or age. Direct all inquiries to the Office of Human Resources, PO Box 1571, Columbia, SC 29202. 23-13872

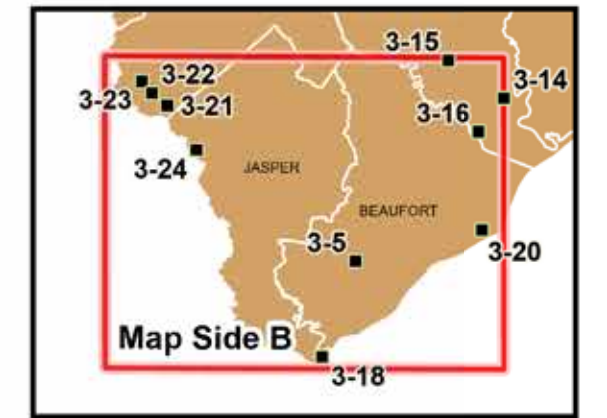
Printed on recycled paper





Hampton and Jasper County Check Stations		
18	Webb WMA	Duration of deer hunts.
19	Palachuola WMA	Duration of deer hunts.
20	Hamilton Ridge WMA	Duration of deer hunts.

- LEGEND**
- Specific Named WMA
  - Other Unnamed WMA
  - Other Protected Land
  - Heritage Preserve
  - Moultrie Hunt Unit Division
  - Francis Marion WMA Boundary
  - Safety Zone/No Hunting
  - No Trespassing
  - Check Station
  - Archery Only
  - Bird Dog Training Area
  - Dove Field
  - Dove Field / Bird Dog Training
  - Youth Hunt Only
  - Quail Hunting
  - Kiosk
  - Hunter Sign In
  - Kiosk/Dove Hunter Sign In
  - Kiosk/Hunter Sign In
  - Camping - Big Game Hunts
  - Camping - Primitive
  - Camping - Seasonal
  - Camping W/ Facilities
  - Rifle Range
  - Archery Range
  - Public Boat Ramp
  - Game Zones



**Thanks to Landowners**

Landowners providing their land for public hunting and recreation are due much appreciation from SCDNR and all outdoor enthusiasts. Without these lands, public hunting as provided in this state would be impossible. Sportsmen seeing the yellow and black diamond-shaped signs designating WMA boundaries should remember they are hunting as guests of the landowner and be respectful of this privilege.

Landowner	Acres
U.S. Forest Service	636,681
S.C. Department of Natural Resources	238,993
S.C. Forestry Commission	94,099
S.C. Public Service Authority (Santee Cooper)	23,696
American Forest Management	13,023
Clemson University	11,265
S.C. Department of Parks, Recreation and Tourism	8,529
Duke Energy Carolinas	7,443
Corps of Engineers (J. Strom Thurmond Res.)	6,506
Crackerneck WMA	10,600
Dominion Energy	5,187
TIAA Timberlands II LLC	4,617
Twin Creeks Timber	4,199
The George Family	3,962
BTG Pactual OEF Property 2, L.P.	3,664
Naturaland Trust	3,337
Potlatch Deltic	2,512
S.C. Public Service Authority (Pee Dee & Spar. Co.)	2,754
U.S. Army Corps of Engineers (Santee)	2,465
Springland, Inc.	1,856
York County	1,643
John and Irene Blackmon	1,587
S.C. Conf. Bd. Of Camps & Retreats	1,060
Timber-Lands L.P.	1,044
Duke Energy Progress	1,036
Vandiviere Properties LLC	655
Thomas Heirs LLC	594
The Nature Conservancy - Nine Times	560
Kafa Company, LLC - Evergreen Investment Group	504
Waterfront Preservation Foundation	491
Manulife Investment Management	476
City of Clinton	276
The Brown Family Limited Partnership	205
Zimmerman Land LLC	188
William & Joab Lesesne	92
<b>TOTAL ACRES</b>	<b>1,072,096</b>

