

# LiDAR and Related Data Products

## Lancaster County

### Overview

Year: 2008

Collected: January 15, 2008 – February 10, 20089

Acquisition by: The Fugro EarthData, Inc.

Point spacing: 1.4 meter nominal point spacing, 18.5 cm vertical RMSE to support 2-foot contours

Progress: complete

Horizontal Coordinate System: State Plane, NAD83, HARN, South Carolina, FIPS 3900, Intl. Feet

Vertical Coordinate System: NAVD88, units US Survey Foot

Available LiDAR Data Products for Lancaster County				
Terrain Surface	LAS	Hydro breaklines	Intensity Images	DEM 10x10 ft Grid
Yes	Yes	Yes	Yes	Yes

---

### Terrain Surface

The terrain for this county was generated by the Technology Development Program, SCDNR.

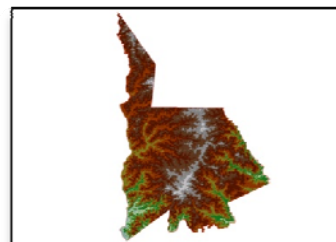
Size: 13.6 GB

Format: ESRI File Geodatabase v9.3

Available for download from SCDNR:

<ftp://ftpdata.dnr.sc.gov/gisdata/elev/Terrain/>

Elevation: (221.357) – (741.632) US Survey Foot



---

### LAS

LAS data for this county originally had vertical units in meters. MARS software was used to project the LAS files for this county to match the project horizontal and vertical coordinate system listed above.

Size: 83.7 GB, 718 files

Available for download from the following sites:

- NOAA: <http://www.csc.noaa.gov/digitalcoast/data/coastallidar/index.html>
- USGS CLICK: <http://lidar.cr.usgs.gov/>

---

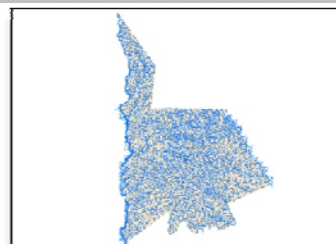
### Hydrobreaklines

Size: 7.78 MB

Format: ESRI File Geodatabase v9.3

Available for download from SCDNR:

- SCDNR: <ftp://ftpdata.dnr.sc.gov/gisdata/elev/Hydrolines/>



## **Intensity Images**

Images are divided into 5000'x5000' tiles and named following the SC Geodetic Survey 1:200 scale tiling scheme used for county orthophotos. TerraSolid software was used to generate the images.

Size: 1.05 GB, 1436 files

Format: tiff images

Available for download from SCDNR:

- [ftp://ftpdata.dnr.sc.gov/gisdata/elev/Intensity\\_Images/](ftp://ftpdata.dnr.sc.gov/gisdata/elev/Intensity_Images/)

Tiling Scheme Index from SC Geodetic Survey (200 Scale Grid):

- <http://www.gis.sc.gov/data.html#GS>

---

## **DEM**

The DEM for this county was generated by the Technology Development Program, SCDNR using the terrain surface data for this county.

Size: 1.5 GB

Cell size: 10 x 10 ft

Format: ESRI File Geodatabase v9.3

Available for download from the following sites:

- SCDNR: <ftp://ftpdata.dnr.sc.gov/gisdata/elev/DEM10x10ft/>
- USGS Seamless Data Warehouse (NED 1/9): <http://seamless.usgs.gov/>



---

If you have any questions or would be interested in participating, please contact:

**Jim Scurry | Technology Development Program Director**

**SC Department of Natural Resources**

**Technology Development Program**

1000 Assembly Street, Suite 125 | Columbia, South Carolina 29201

T 803.734-9494 | F 803.734-7001 | Email: [scurryj@dnr.sc.gov](mailto:scurryj@dnr.sc.gov)

<http://www.dnr.sc.gov>

**Gary Merrill | Geospatial Liaison to SC**

**U.S Geological Survey**

**NSDI Partnership Office**

Columbia, South Carolina 29210

T 803.750-6124 | F 803.750-6181 | Email: [gmerrill@usgs.gov](mailto:gmerrill@usgs.gov)

<http://www.usgs.gov/ngpo>