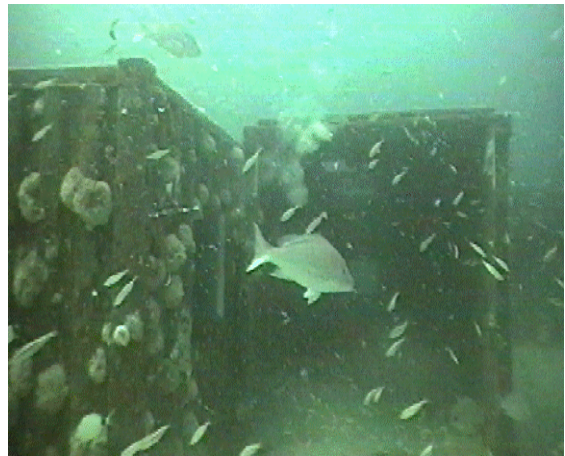


PA-10

2 buoys mark reef, bearing 130° / 9.5 nm from south jetty at Murrells Inlet - water depth 45'

| Reef | Structure | Latitude | Longitude |
|-----------------|-------------------------------|-----------|------------|
| | | N | W |
| | 1) NW Reef Buoy | 33 26.261 | 078 52.706 |
| | 2) SE Reef Buoy | 33 25.300 | 078 51.478 |
| Bruce Rush Reef | 3) 100 Concrete cones | 33 26.097 | 078 52.663 |
| | 4) 65' Crew boat | 33 26.007 | 078 52.663 |
| | 5) 78' Shrimp boat (Capt Dan) | 33 25.917 | 078 52.456 |
| Ten Mile Reef | 6) Concrete reef balls | 33 26.081 | 078 52.239 |
| | 7) Concrete reef balls | 33 26.092 | 078 52.201 |
| | 8) 200' Deck barge | 33 26.407 | 078 52.807 |
| | 9) Concrete boxes & culvert | 33 26.250 | 078 52.472 |
| | 10) Concrete boxes & culvert | 33 26.249 | 078 52.461 |
| | 11) Concrete boxes & culvert | 33 26.000 | 078 52.100 |
| | 12) Army APCs | 33 25.593 | 078 51.947 |
| | 13) Army APCs | 33 25.562 | 078 51.914 |
| | 14) Army APCs | 33 25.564 | 078 51.897 |
| | 15) Army APCs | 33 25.581 | 078 51.896 |
| | 16) Army APCs | 33 25.584 | 078 51.915 |
| Jim Kidd Reef | 17) Concrete boxes | 33 25.500 | 078 51.500 |
| | 18) Tugboat & Barge | 33 25.389 | 078 51.609 |
| | 19) A-7 Airplane | 33 25.387 | 078 51.605 |
| | 20) Shipping containers | 33 25.364 | 078 51.991 |
| | 21) Shipping containers | 33 25.320 | 078 51.962 |
| | 22) Shipping containers | 33 25.356 | 078 52.033 |
| | 23) Shipping containers | 33 25.266 | 078 52.107 |
| | 24) 50' Deck barge | 33 25.384 | 078 51.697 |



PA-10

