

South Carolina's

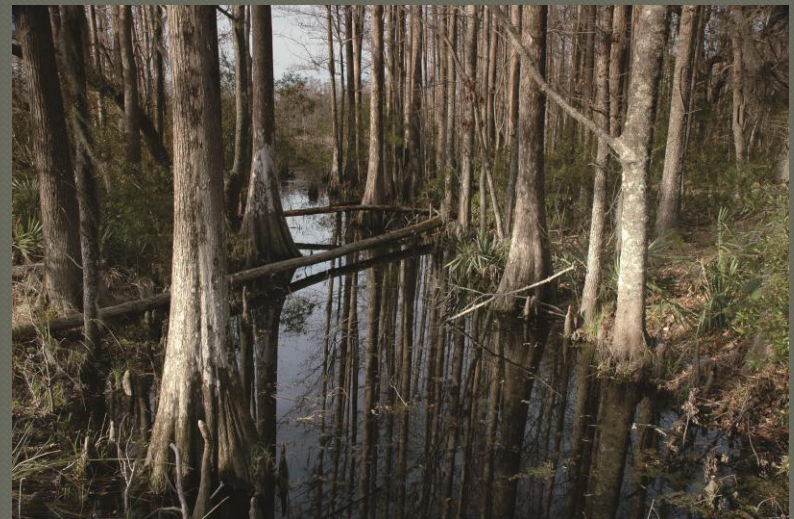
Comprehensive Wildlife Conservation Strategy (CWCS)



– CWCS Coordinator

What is the CWCS?

- Comprehensive step-by-step guide for conservation actions
- Preserve species / habitats statewide



Inside the CWCS

- ◉ Addresses species with 'greatest conservation need' (SGCN)
- ◉ Important habitats
- ◉ Focuses on problems / strategies for SGCN's



Why CWCS was developed

- ◉ Legislative mandate / USFWS
- ◉ State Wildlife Grants Program (SWG)
- ◉ Charged states with plan development by October 2005
- ◉ Plan must address SGCN's & wildlife related issues

Eight Required Elements

- Info on distribution / abundance of SGCN's
- Location / condition of key habitats
- Descriptions of problems
- Necessary conservation actions
- Plans for monitoring SGCN's
- Revision process
- Plans for implementation
- Public / partner input

How was it developed

- ◉ CWCS Steering committee
- ◉ Taxa Teams
- ◉ Various committees
- ◉ Public / partner input process
- ◉ Completed in 2005



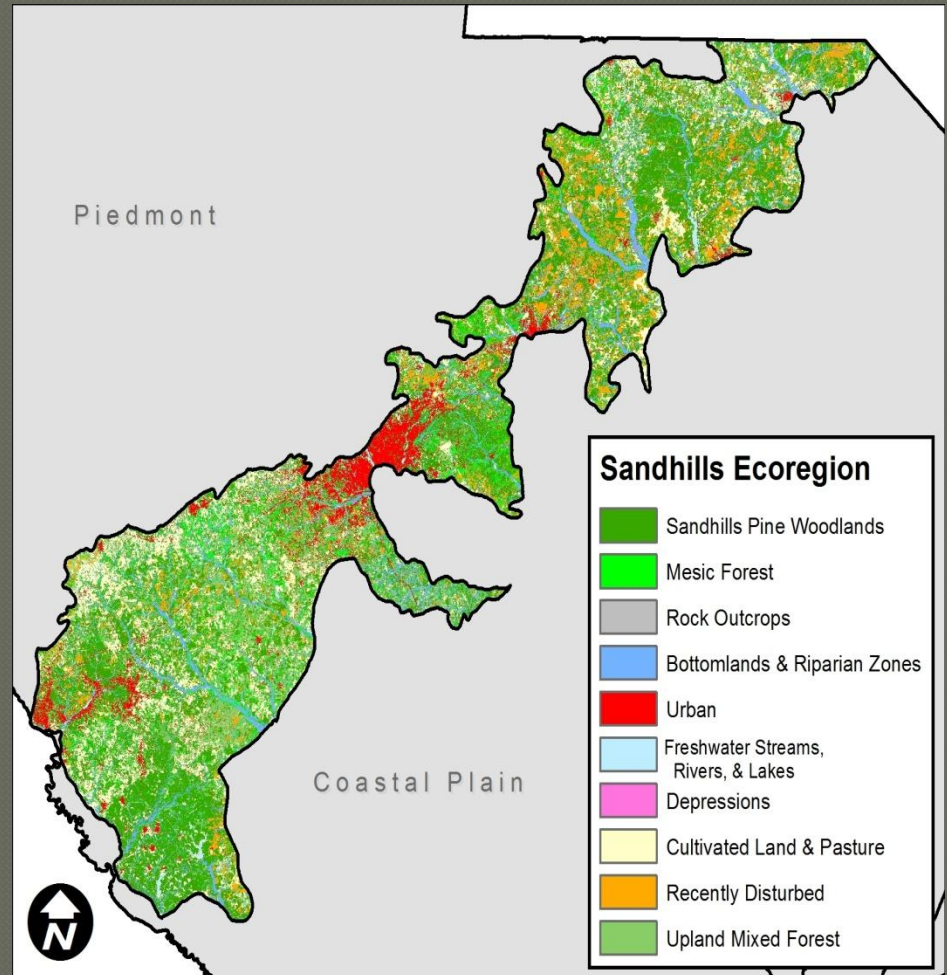
Revision

- ◉ Mandate by USFWS to update every 10 years
- ◉ Started in April 2011
- ◉ Due by October 2015



Work in Progress

- Habitat chapter
- Review of SGCN's
- Climate issues



Climate Issues

- ◉ Participation in this workshop
- ◉ Inclusion of Climate - Not required but recommended
- ◉ Potential options for incorporation
- ◉ Looking for public / partner input

How can you help?

- ◉ Be involved in revision process
- ◉ Participate in workshops / comment sessions
- ◉ Input on climate issues & plan
- ◉ Use the plan!