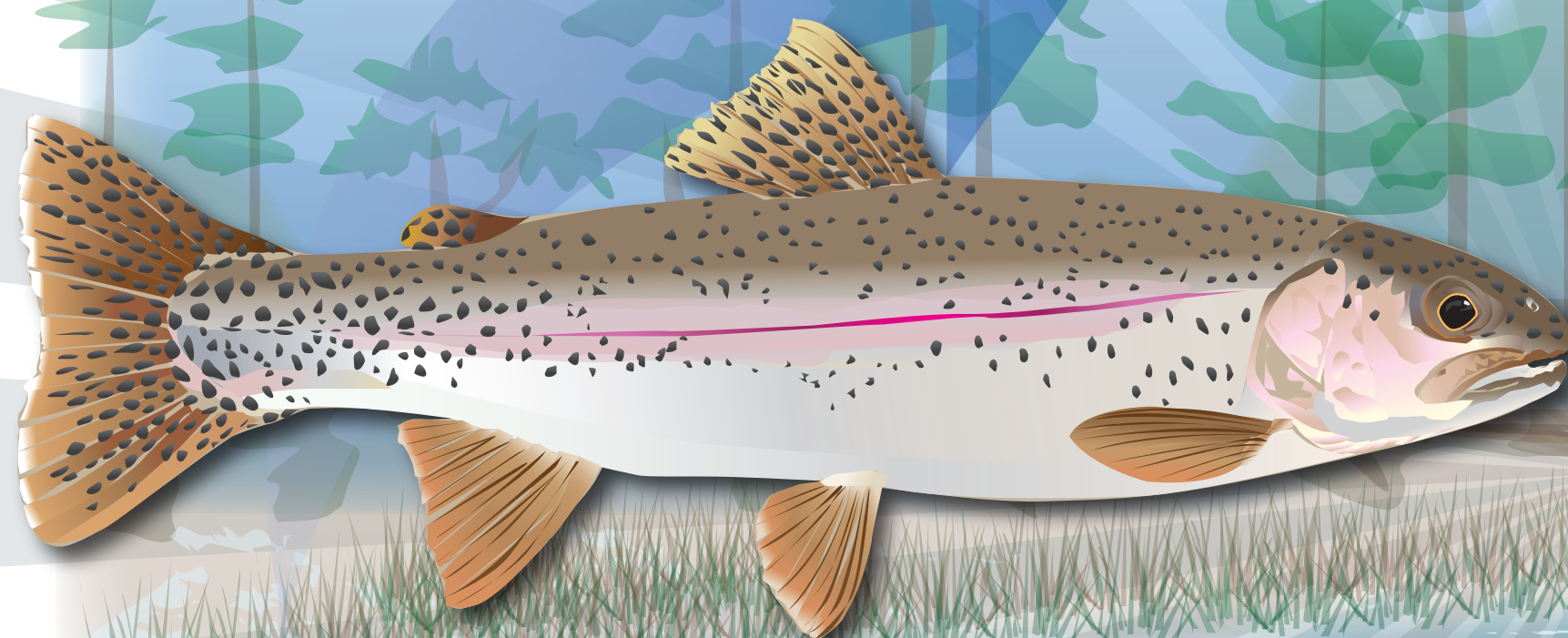


LIFE STAGES of the RAINBOW TROUT

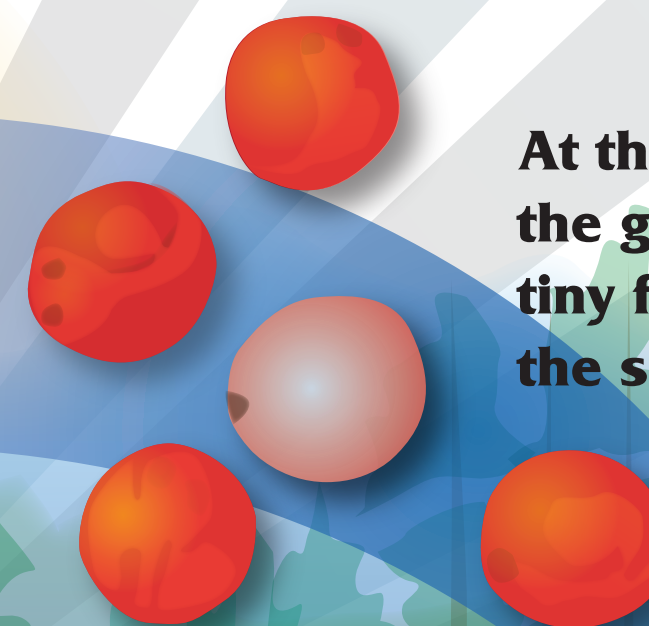
SPAWNING ADULTS

Trout swim back to their home streams to lay eggs in nests, called redds, on the bottom of the stream. Trout often spawn several times throughout their lives.

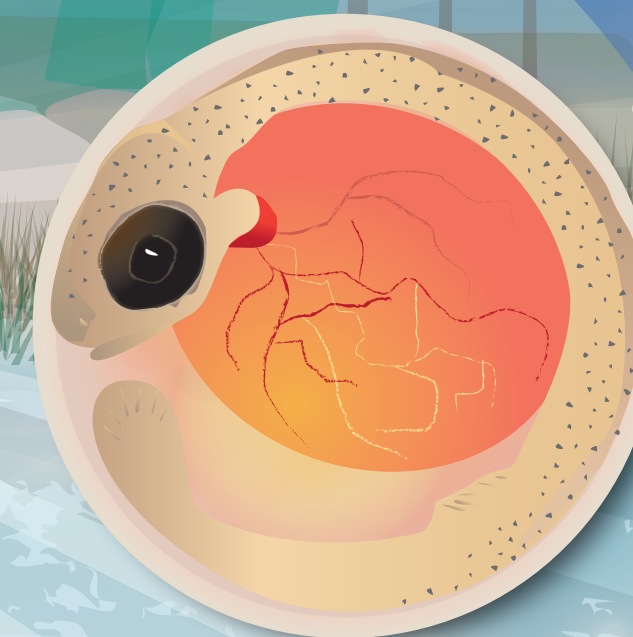


EGGS

At this stage, eggs are buried in the gravel of small streams. The tiny fish absorb oxygen through the shells of their eggs.



Enlarged illustration of a baby fish - called an alevin - inside the egg.



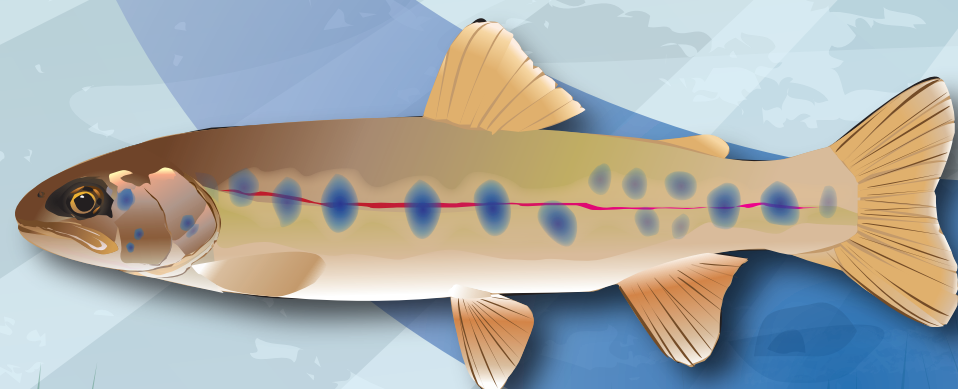
Actual size of egg
● 1/4 inch

Actual size of alevin
● 3/4 inch

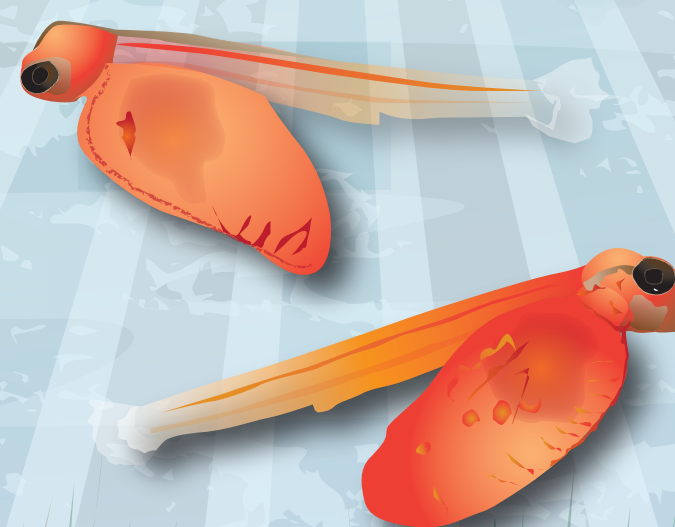


FRY

Maturing trout - called fry - live in gentle water along the stream bank and focus on finding food to grow and build their strength.



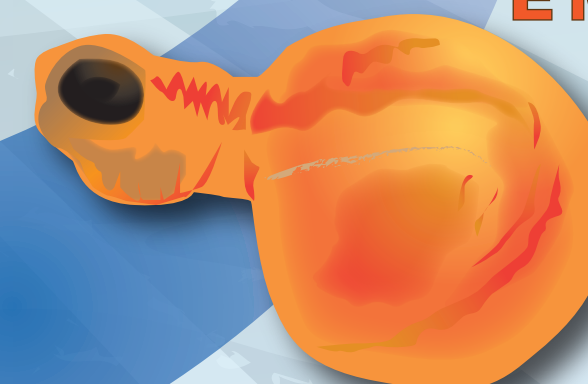
Trout thrive best in water temperatures between 45 and 60 degrees Fahrenheit. Within this range, the warmer the water, the more rapidly trout grow.



ALEVINS

Newly hatched trout breathe with gills and get food from a yolk sac attached to their bellies.

EMERGING FRY



DNR

Artwork courtesy of Idaho Fish & Game
Artwork by Renai C. Brogdon IDFG 2011



www.dnr.sc.gov