



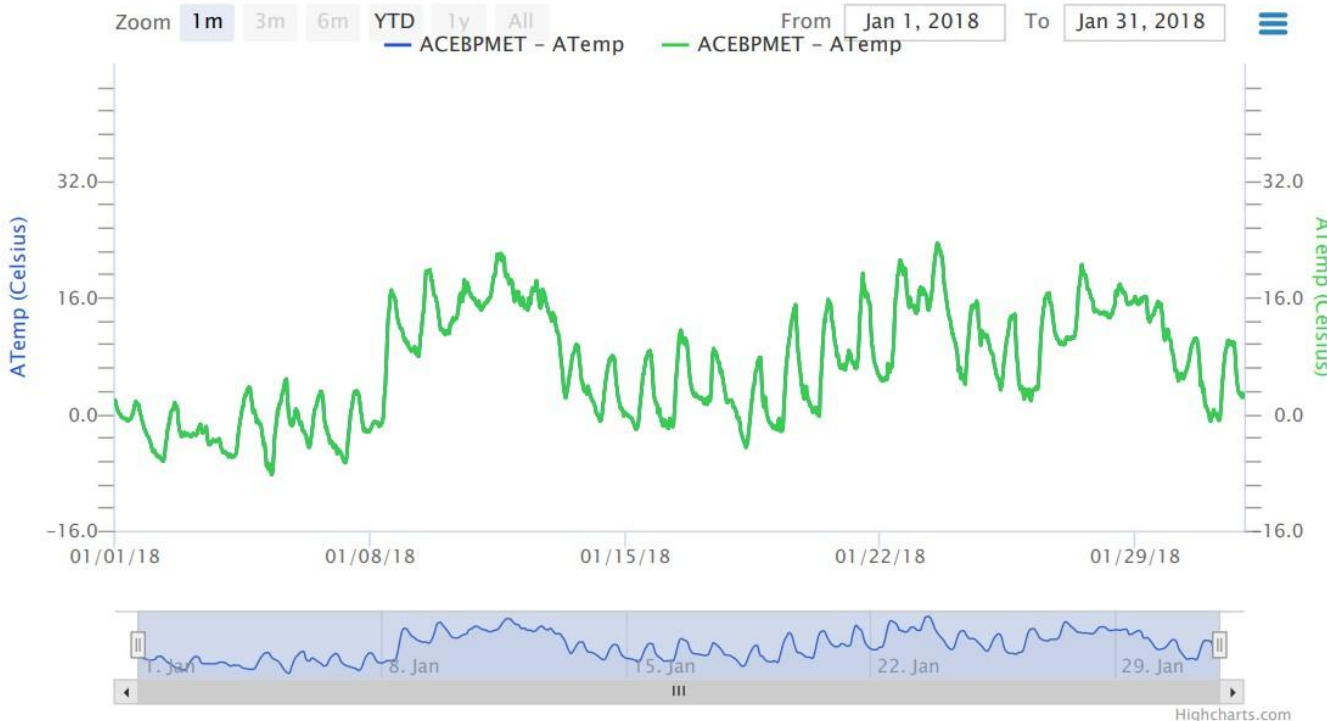
Great Graphs

Either create graphs for students to read or help them create the graphs

<https://cdmo.baruch.sc.edu/dges/>

If you need a tutorial on how to create a graph, [go here.](#)

Air Temperature graph for one month



Look at the y-axis of the graph, what does it say?

What units are used to measure temperature in this graph?

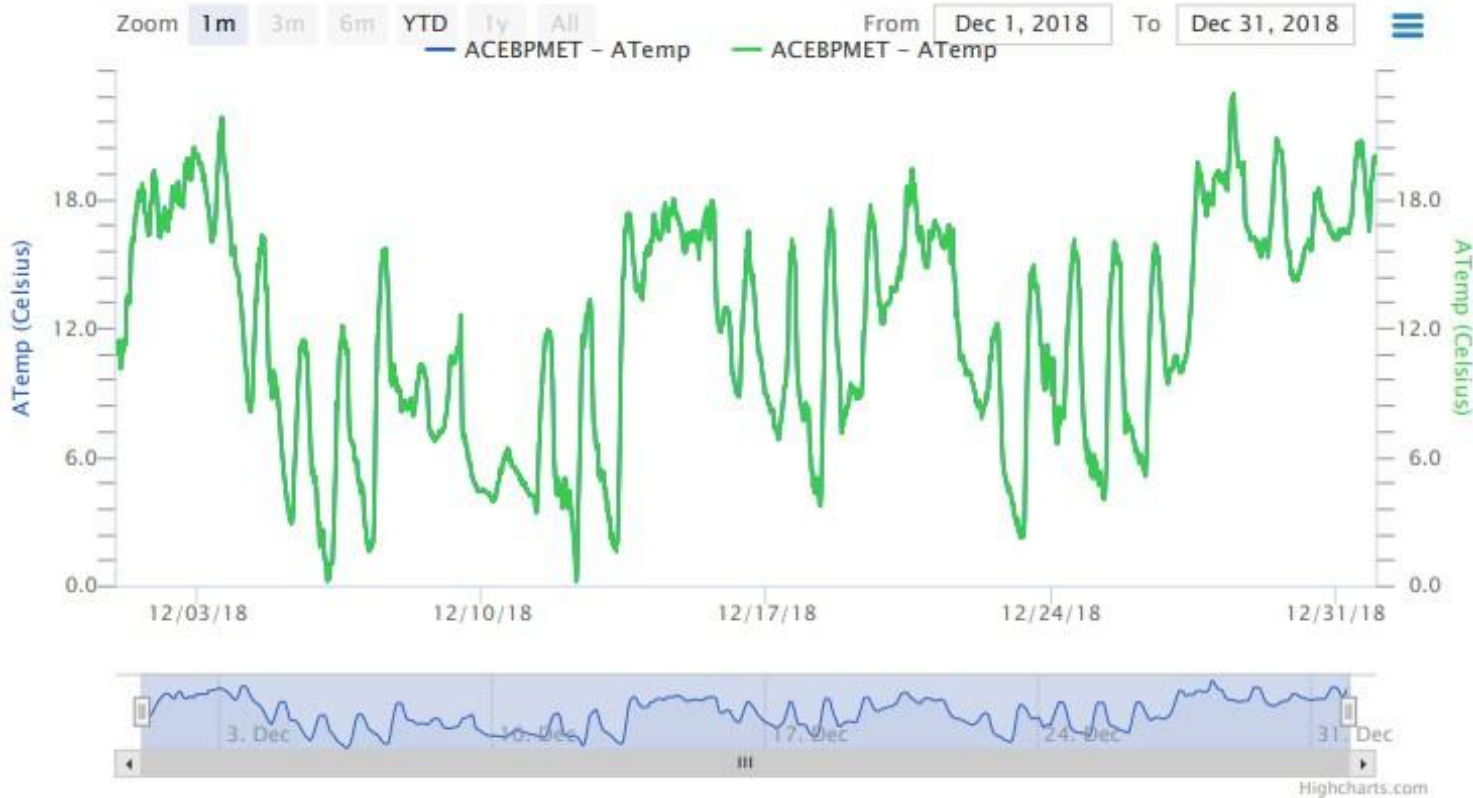
On the x-axis, what is the graph showing?

What was the highest air temperature for the month and what day was it?

What was the lowest air temperature of the month and what day was it?

ACEBPMET: ACE Basin Bennett's Point Meteorological station
ATemp: Air Temperature

Air Temperature graph for a different month



How is this graph different from the last?

How do you think animals adjust to quickly changing temperatures?

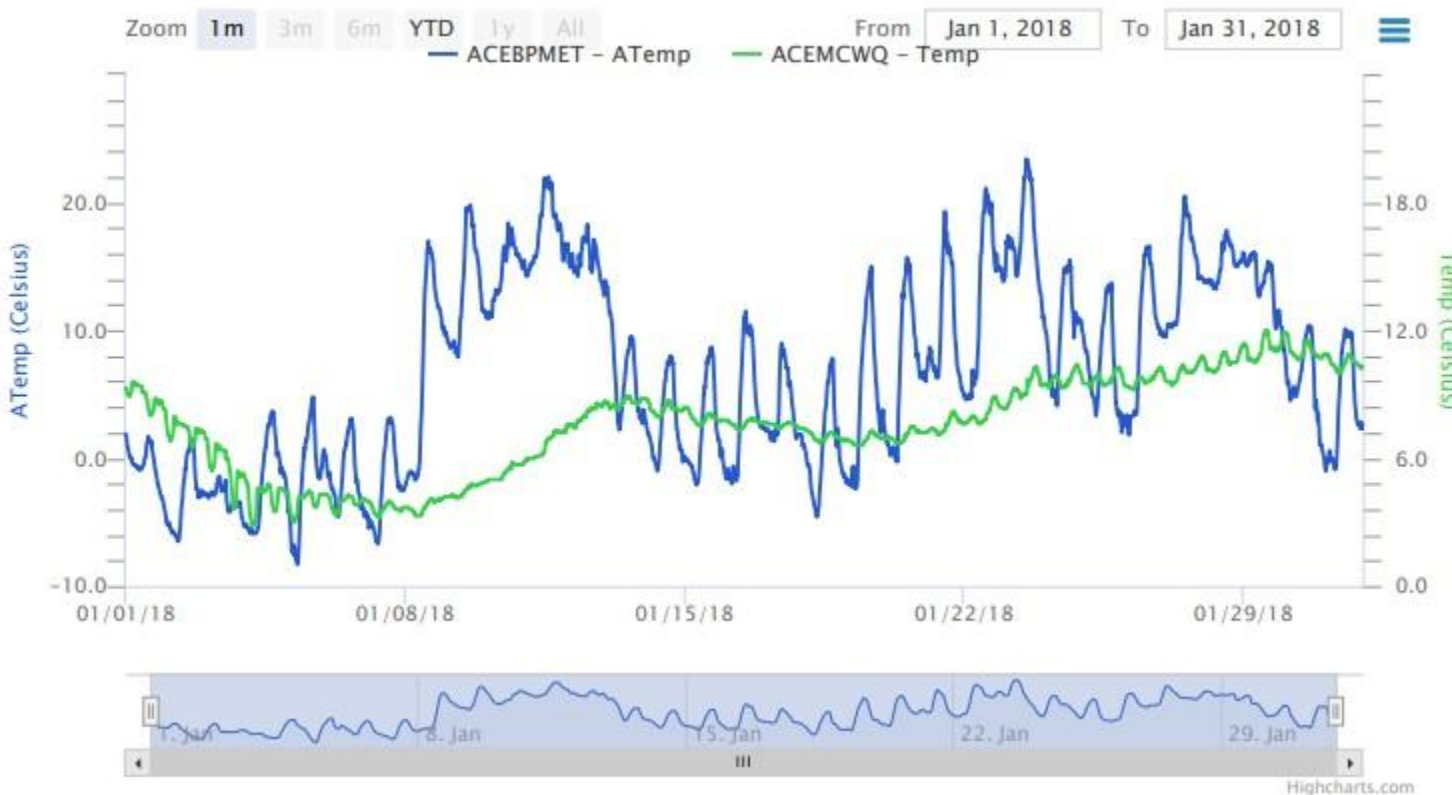
What is the highest air temperature and what was the date?

What is the lowest air temperature and what was the date?

What do you think animals that normally hibernate during the winter do when it gets really warm?

ACEBPMET: ACE Basin Bennett's Point Meteorological station
ATemp: Air Temperature

Air Temperature and Water Temperature on one graph



ACEBPMET: ACE Basin Bennett's Point Meteorological station-**Air** Temperature **Atemp**
ACEMCWQ: ACE Basin Mosquito Creek Water Quality- **Water** Temperature **Temp**

Now notice there are TWO y-axis!

What are the two y-axis showing?

Which temperature changes more frequently than the other?

Which date shows the largest difference between air and water temperature?

On that day, what is the air temperature and water temperature?

What temperature do you think can change faster?

Make a design with your graph!

