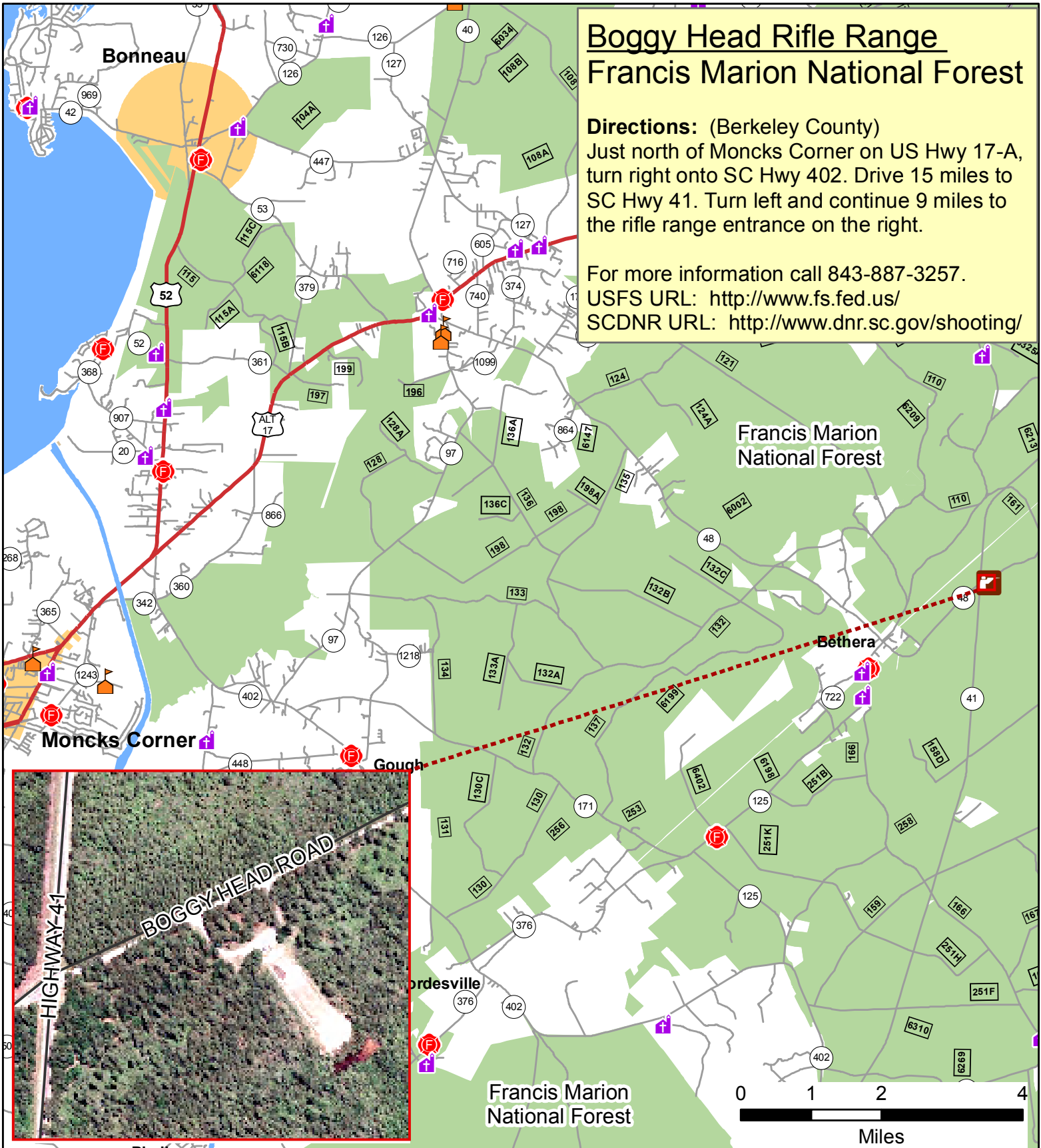


Boggy Head Rifle Range Francis Marion National Forest

Directions: (Berkeley County)
Just north of Moncks Corner on US Hwy 17-A, turn right onto SC Hwy 402. Drive 15 miles to SC Hwy 41. Turn left and continue 9 miles to the rifle range entrance on the right.

For more information call 843-887-3257.
USFS URL: <http://www.fs.fed.us/>
SCDNR URL: <http://www.dnr.sc.gov/shooting/>



South Carolina
Department of Natural Resources
Technology Development Program
Columbia, South Carolina
URL: <http://www.dnr.sc.gov>

June 2010

- | | | | | | |
|--|--------------------|--|--------------|-----------------------------|-------------------|
| | Rifle Range | | Interstate | DNR Managed Property | |
| | Hospital | | US Highway | | WMA Property |
| | College/University | | Street | | Heritage Preserve |
| | School | | Railroad | | |
| | Church | | Municipality | | |
| | Fire Station | | | | |

