

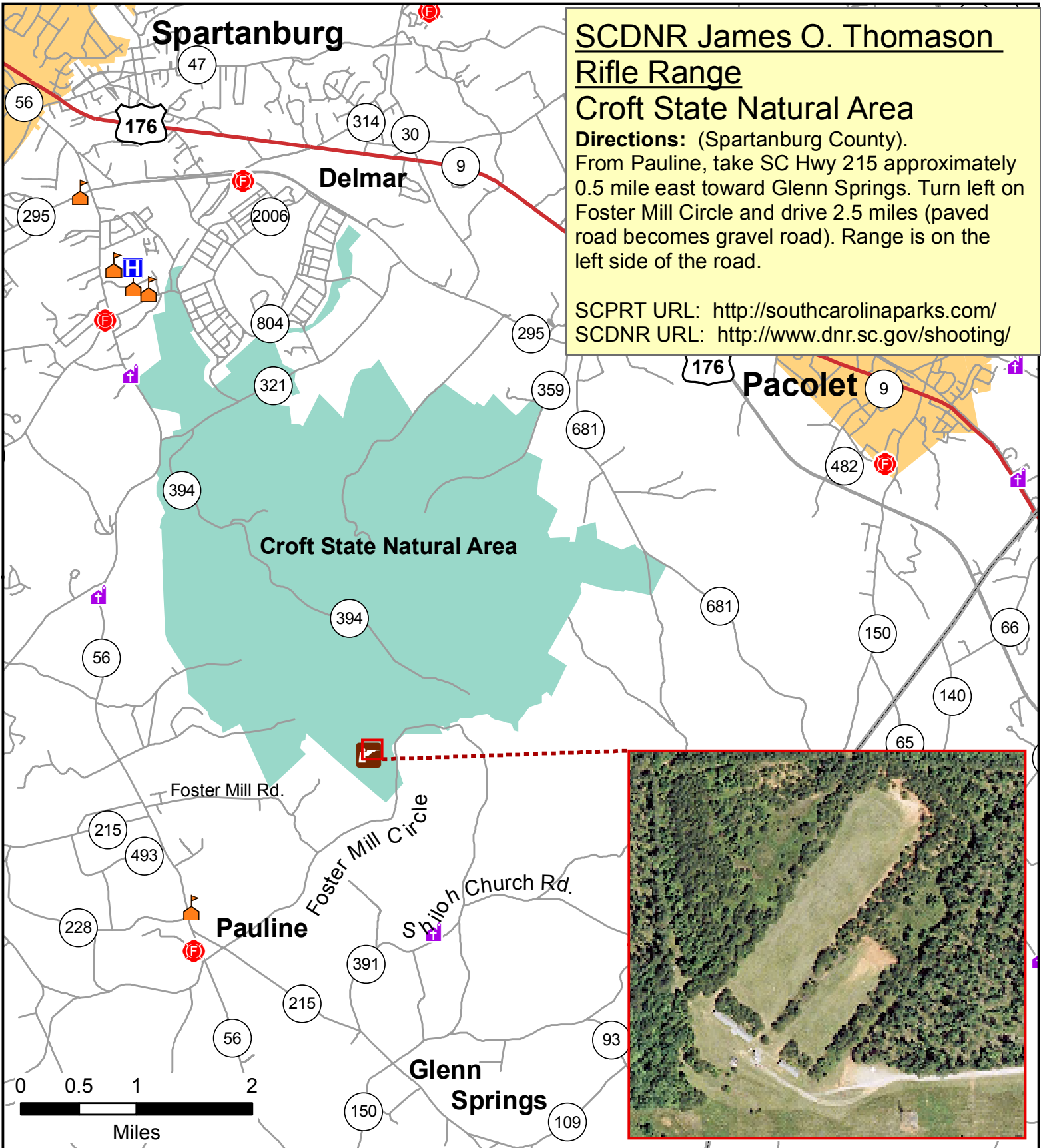
# Spartanburg

## SCDNR James O. Thomason Rifle Range

### Croft State Natural Area

**Directions:** (Spartanburg County). From Pauline, take SC Hwy 215 approximately 0.5 mile east toward Glenn Springs. Turn left on Foster Mill Circle and drive 2.5 miles (paved road becomes gravel road). Range is on the left side of the road.

SCPRT URL: <http://southcarolinaparks.com/>  
 SCDNR URL: <http://www.dnr.sc.gov/shooting/>



South Carolina  
 Department of Natural Resources  
 Technology Development Program  
 Columbia, South Carolina  
 URL: <http://www.dnr.sc.gov>

June 2010

- |  |                    |  |              |  |   |
|--|--------------------|--|--------------|--|---|
|  | Rifle Range        |  | Interstate   |  | <b>DNR Managed Property</b><br>WMA Property |
|  | Hospital           |  | US Highway   |  | Heritage Preserve                           |
|  | College/University |  | Street       |  | SCPRT State Park                            |
|  | School             |  | Railroad     |  |   |
|  | Church             |  | Municipality |  |   |
|  | Fire Station       |  |              |  |   |

