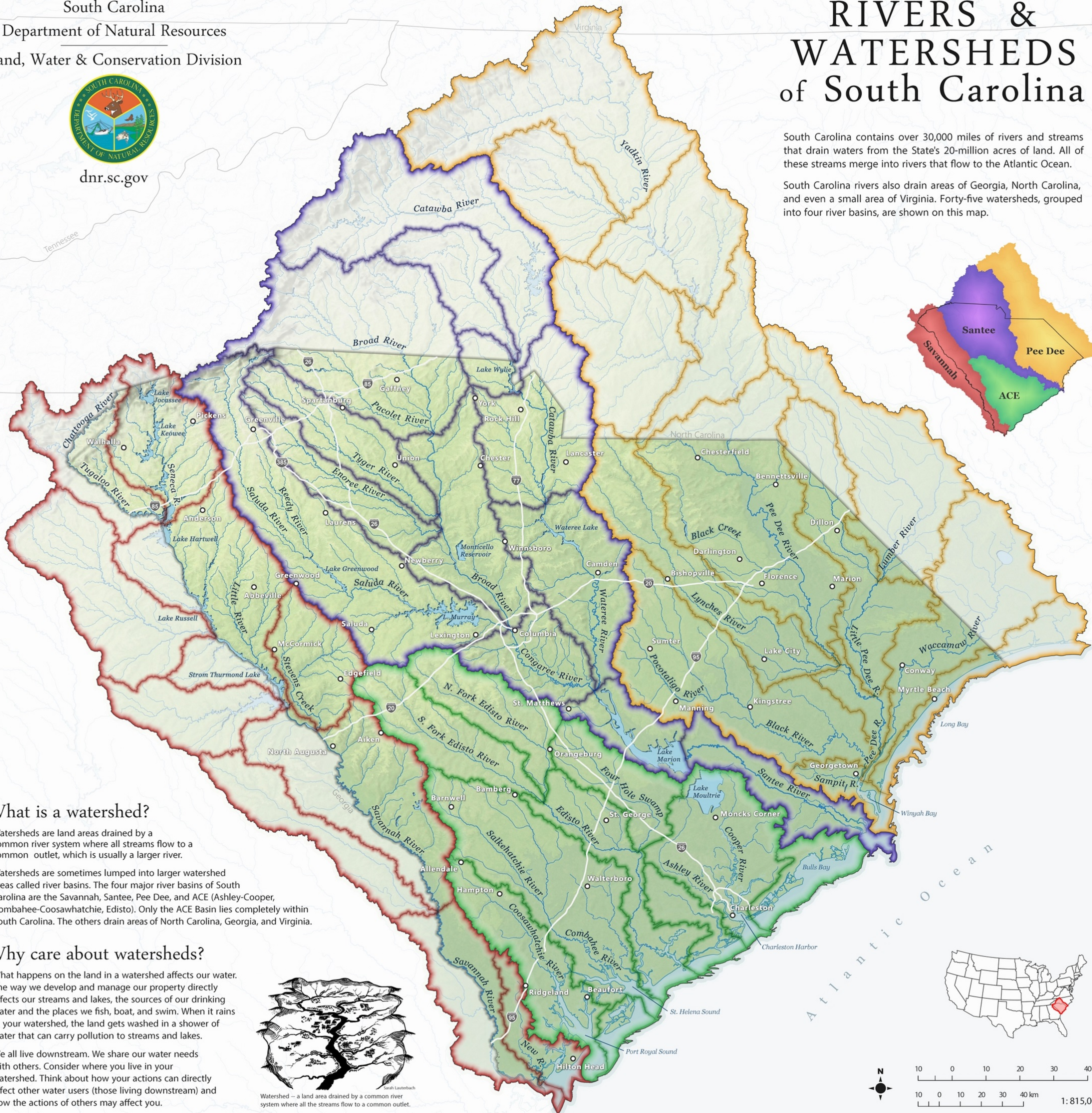




# RIVERS & WATERSHEDS of South Carolina

South Carolina contains over 30,000 miles of rivers and streams that drain waters from the State's 20-million acres of land. All of these streams merge into rivers that flow to the Atlantic Ocean.

South Carolina rivers also drain areas of Georgia, North Carolina, and even a small area of Virginia. Forty-five watersheds, grouped into four river basins, are shown on this map.



## What is a watershed?

Watersheds are land areas drained by a common river system where all streams flow to a common outlet, which is usually a larger river.

Watersheds are sometimes lumped into larger watershed areas called river basins. The four major river basins of South Carolina are the Savannah, Santee, Pee Dee, and ACE (Ashley-Cooper, Combahee-Coosawatchie, Edisto). Only the ACE Basin lies completely within South Carolina. The others drain areas of North Carolina, Georgia, and Virginia.

## Why care about watersheds?

What happens on the land in a watershed affects our water. The way we develop and manage our property directly affects our streams and lakes, the sources of our drinking water and the places we fish, boat, and swim. When it rains in your watershed, the land gets washed in a shower of water that can carry pollution to streams and lakes.

We all live downstream. We share our water needs with others. Consider where you live in your watershed. Think about how your actions can directly affect other water users (those living downstream) and how the actions of others may affect you.



Watershed -- a land area drained by a common river system where all the streams flow to a common outlet.

