

List of Tables

Table	Title	Page
1	Estimated statewide deer harvest in South Carolina in 2020.....	16
2	County rankings based on deer harvest per unit area in South Carolina 2020	17
3	County rankings based on total deer harvest in South Carolina in 2020	18
4	Estimated deer harvest on Wildlife Management Areas in South Carolina in 2020	19
5	Hunter opinion (percent) regarding the number of deer in the area hunted most often in South Carolina in 2020 compared to previous years	19
6	Resident deer hunter and deer harvest statistics in South Carolina in 2020	20
7	Nonresident deer hunter and deer harvest statistics in South Carolina in 2020.....	21
8	Hunting effort (man/days) by county for successful and unsuccessful resident and nonresident hunters in South Carolina in 2020	22
9	Estimated deer harvest by weapon type in South Carolina in 2020	23
10	Number of deer hunters using each type of weapon in South Carolina in 2020	23
11	Weapons utilization (percent) among deer hunters in South Carolina in 2020	23
12	Weapons preference (percent) among deer hunters in South Carolina in 2020	23
13	Estimated wild hog and coyote harvest by deer hunters in South Carolina in 2020	24
14	Number of deer-vehicle collisions reported by the South Carolina Department of Public Safety 2016-2020.....	25
15	Average live body weights of deer from South Carolina counties, based on historic data.....	26
16	Antler characteristics of male deer from South Carolina counties, based on historic data.....	27

List of Figures

Figure	Title	Page
1	South Carolina Department of Natural Resources 2020 Deer Hunter Survey.....	28-29
2	Percent of deer harvested by month of season in South Carolina in 2020	30
3	Percent of female deer conceiving by week in South Carolina, based on historic data.....	30
4	Estimated deer harvest in South Carolina, 1972-2020.....	31
5	Estimated South Carolina deer population 1972-2020, based on population reconstruction modeling	31

Table 1. Estimated statewide deer harvest in South Carolina in 2020.

County	Acres*	Square Miles	Buck Harvest	Doe Harvest	Total Harvest	Harvest Rates		% Change from 2019
						Ac/Deer	Deer/Mi. ²	
Abbeville	223,113	349	1,896	1,494	3,390	65.8	9.7	-7.1
Aiken	500,546	782	2,427	2,081	4,508	111.0	5.8	6.5
Allendale	216,455	338	2,014	1,828	3,842	56.3	11.4	10.6
Anderson	219,068	342	3,135	3,046	6,181	35.4	18.1	4.3
Bamberg	196,573	307	2,657	2,393	5,050	38.9	16.4	4.0
Barnwell	281,764	440	2,005	2,165	4,170	67.6	9.5	3.4
Beaufort	147,441	230	763	875	1,638	90.0	7.1	-42.3
Berkeley	567,530	887	3,475	2,745	6,220	91.2	7.0	1.4
Calhoun	190,584	298	1,695	1,454	3,149	60.5	10.6	22.5
Charleston	288,732	451	2,170	1,922	4,092	70.6	9.1	-2.1
Cherokee	156,664	245	1,875	1,151	3,026	51.8	12.4	3.8
Chester	300,589	470	2,145	1,895	4,040	74.4	8.6	-16.1
Chesterfield	372,478	582	2,459	1,640	4,099	90.9	7.0	18.3
Clarendon	298,087	466	1,657	1,170	2,827	105.4	6.1	-24.0
Colleton	502,666	785	4,272	4,233	8,505	59.1	10.8	10.1
Darlington	286,228	447	1,567	853	2,420	118.3	5.4	-10.9
Dillon	214,069	334	508	457	965	221.8	2.9	-28.4
Dorchester	302,717	473	2,148	2,177	4,325	70.0	9.1	-15.0
Edgefield	246,543	385	2,186	1,547	3,733	66.0	9.7	8.7
Fairfield	384,607	601	3,943	2,567	6,510	59.1	10.8	8.8
Florence	397,888	622	2,659	2,376	5,035	79.0	8.1	-3.5
Georgetown	399,638	624	1,667	1,524	3,191	125.2	5.1	20.1
Greenville	294,257	460	1,807	1,551	3,358	87.6	7.3	-14.8
Greenwood	204,400	319	1,945	1,849	3,794	53.9	11.9	30.7
Hampton	324,840	508	3,459	3,387	6,846	47.4	13.5	21.7
Horry	533,336	833	2,036	1,595	3,631	146.9	4.4	18.5
Jasper	309,889	484	1,729	1,105	2,834	109.3	5.9	-18.4
Kershaw	360,485	563	3,333	2,431	5,764	62.5	10.2	-0.6
Lancaster	266,382	416	2,522	1,674	4,196	63.5	10.1	-11.0
Laurens	317,916	497	3,392	2,525	5,917	53.7	11.9	-5.4
Lee	220,106	344	1,638	1,338	2,976	74.0	8.7	12.7
Lexington	280,742	439	2,026	1,140	3,166	88.7	7.2	-8.2
McCormick	212,021	331	1,832	1,332	3,164	67.0	9.6	155.4
Marion	216,907	339	830	467	1,297	167.2	3.8	-43.1
Marlboro	281,271	439	1,277	805	2,082	135.1	4.7	-20.9
Newberry	317,761	497	2,905	2,194	5,099	62.3	10.3	-7.9
Oconee	284,348	444	1,290	745	2,035	139.7	4.6	-6.7
Orangeburg	504,516	788	6,171	5,918	12,089	41.7	15.3	29.8
Pickens	219,926	344	1,733	1,004	2,737	80.4	8.0	2.2
Richland	340,121	531	2,355	1,861	4,216	80.7	7.9	33.8
Saluda	192,173	300	2,011	2,144	4,155	46.3	13.8	58.2
Spartanburg	265,939	416	3,487	3,637	7,124	37.3	17.1	-3.2
Sumter	338,968	530	1,804	1,665	3,469	97.7	6.5	-22.5
Union	258,111	403	2,167	2,283	4,450	58.0	11.0	0.3
Williamsburg	513,851	803	3,082	3,972	7,054	72.8	8.8	-8.0
York	276,650	432	3,059	2,466	5,525	50.1	12.8	18.3
Total	14,028,896	21,920	107,212	90,681	197,893	81.1	9.3	2.4

95% Confidence Interval for harvest (+ -) 3,573 (+ -) 3,844 (+ -) 5,901

* Acreage shown represents the acreage of forested land and acreage of row crops considered to be significant deer habitat within each county.

Table 2. County rankings based on deer harvested per unit area in South Carolina in 2020.

County	Acres*	Square Miles	Buck Harvest	Doe Harvest	Total Harvest	Harvest Rates		% Change from 2019
						Ac/Deer	Deer/Mi. ²	
Anderson	219,068	342	3,135	3,046	6,181	35.4	18.1	4.3
Spartanburg	265,939	416	3,487	3,637	7,124	37.3	17.1	-3.2
Bamberg	196,573	307	2,657	2,393	5,050	38.9	16.4	4.0
Orangeburg	504,516	788	6,171	5,918	12,089	41.7	15.3	29.8
Saluda	192,173	300	2,011	2,144	4,155	46.3	13.8	58.2
Hampton	324,840	508	3,459	3,387	6,846	47.4	13.5	21.7
York	276,650	432	3,059	2,466	5,525	50.1	12.8	18.3
Cherokee	156,664	245	1,875	1,151	3,026	51.8	12.4	3.8
Laurens	317,916	497	3,392	2,525	5,917	53.7	11.9	-5.4
Greenwood	204,400	319	1,945	1,849	3,794	53.9	11.9	30.7
Allendale	216,455	338	2,014	1,828	3,842	56.3	11.4	10.6
Union	258,111	403	2,167	2,283	4,450	58.0	11.0	0.3
Fairfield	384,607	601	3,943	2,567	6,510	59.1	10.8	8.8
Colleton	502,666	785	4,272	4,233	8,505	59.1	10.8	10.1
Calhoun	190,584	298	1,695	1,454	3,149	60.5	10.6	22.5
Newberry	317,761	497	2,905	2,194	5,099	62.3	10.3	-7.9
Kershaw	360,485	563	3,333	2,431	5,764	62.5	10.2	-0.6
Lancaster	266,382	416	2,522	1,674	4,196	63.5	10.1	-11.0
Abbeville	223,113	349	1,896	1,494	3,390	65.8	9.7	-7.1
Edgefield	246,543	385	2,186	1,547	3,733	66.0	9.7	8.7
McCormick	212,021	331	1,832	1,332	3,164	67.0	9.6	155.4
Barnwell	281,764	440	2,005	2,165	4,170	67.6	9.5	3.4
Dorchester	302,717	473	2,148	2,177	4,325	70.0	9.1	-15.0
Charleston	288,732	451	2,170	1,922	4,092	70.6	9.1	-2.1
Williamsburg	513,851	803	3,082	3,972	7,054	72.8	8.8	-8.0
Lee	220,106	344	1,638	1,338	2,976	74.0	8.7	12.7
Chester	300,589	470	2,145	1,895	4,040	74.4	8.6	-16.1
Florence	397,888	622	2,659	2,376	5,035	79.0	8.1	-3.5
Pickens	219,926	344	1,733	1,004	2,737	80.4	8.0	2.2
Richland	340,121	531	2,355	1,861	4,216	80.7	7.9	33.8
Greenville	294,257	460	1,807	1,551	3,358	87.6	7.3	-14.8
Lexington	280,742	439	2,026	1,140	3,166	88.7	7.2	-8.2
Beaufort	147,441	230	763	875	1,638	90.0	7.1	-42.3
Chesterfield	372,478	582	2,459	1,640	4,099	90.9	7.0	18.3
Berkeley	567,530	887	3,475	2,745	6,220	91.2	7.0	1.4
Sumter	338,968	530	1,804	1,665	3,469	97.7	6.5	-22.5
Clarendon	298,087	466	1,657	1,170	2,827	105.4	6.1	-24.0
Jasper	309,889	484	1,729	1,105	2,834	109.3	5.9	-18.4
Aiken	500,546	782	2,427	2,081	4,508	111.0	5.8	6.5
Darlington	286,228	447	1,567	853	2,420	118.3	5.4	-10.9
Georgetown	399,638	624	1,667	1,524	3,191	125.2	5.1	20.1
Marlboro	281,271	439	1,277	805	2,082	135.1	4.7	-20.9
Oconee	284,348	444	1,290	745	2,035	139.7	4.6	-6.7
Horry	533,336	833	2,036	1,595	3,631	146.9	4.4	18.5
Marion	216,907	339	830	467	1,297	167.2	3.8	-43.1
Dillon	214,069	334	508	457	965	221.8	2.9	-28.4
Total	14,028,896	21,920	107,212	90,681	197,893	81.1	9.3	

* Acreage shown represents the acreage of forested land and acreage of row crops considered to be significant deer habitat within each county.

Table 3. County rankings based on total deer harvested in South Carolina in 2020.

County	Acres*	Square Miles	Buck Harvest	Doe Harvest	Total Harvest	Harvest Rates		% Change from 2019
						Ac/Deer	Deer/Mi. ²	
Orangeburg	504,516	788	6,171	5,918	12,089	41.7	15.3	29.8
Colleton	502,666	785	4,272	4,233	8,505	59.1	10.8	10.1
Spartanburg	265,939	416	3,487	3,637	7,124	37.3	17.1	-3.2
Williamsburg	513,851	803	3,082	3,972	7,054	72.8	8.8	-8.0
Hampton	324,840	508	3,459	3,387	6,846	47.4	13.5	21.7
Fairfield	384,607	601	3,943	2,567	6,510	59.1	10.8	8.8
Berkeley	567,530	887	3,475	2,745	6,220	91.2	7.0	1.4
Anderson	219,068	342	3,135	3,046	6,181	35.4	18.1	4.3
Laurens	317,916	497	3,392	2,525	5,917	53.7	11.9	-5.4
Kershaw	360,485	563	3,333	2,431	5,764	62.5	10.2	-0.6
York	276,650	432	3,059	2,466	5,525	50.1	12.8	18.3
Newberry	317,761	497	2,905	2,194	5,099	62.3	10.3	-7.9
Bamberg	196,573	307	2,657	2,393	5,050	38.9	16.4	4.0
Florence	397,888	622	2,659	2,376	5,035	79.0	8.1	-3.5
Aiken	500,546	782	2,427	2,081	4,508	111.0	5.8	6.5
Union	258,111	403	2,167	2,283	4,450	58.0	11.0	0.3
Dorchester	302,717	473	2,148	2,177	4,325	70.0	9.1	-15.0
Richland	340,121	531	2,355	1,861	4,216	80.7	7.9	33.8
Lancaster	266,382	416	2,522	1,674	4,196	63.5	10.1	-11.0
Barnwell	281,764	440	2,005	2,165	4,170	67.6	9.5	3.4
Saluda	192,173	300	2,011	2,144	4,155	46.3	13.8	58.2
Chesterfield	372,478	582	2,459	1,640	4,099	90.9	7.0	18.3
Charleston	288,732	451	2,170	1,922	4,092	70.6	9.1	-2.1
Chester	300,589	470	2,145	1,895	4,040	74.4	8.6	-16.1
Allendale	216,455	338	2,014	1,828	3,842	56.3	11.4	10.6
Greenwood	204,400	319	1,945	1,849	3,794	53.9	11.9	30.7
Edgefield	246,543	385	2,186	1,547	3,733	66.0	9.7	8.7
Horry	533,336	833	2,036	1,595	3,631	146.9	4.4	18.5
Sumter	338,968	530	1,804	1,665	3,469	97.7	6.5	-22.5
Abbeville	223,113	349	1,896	1,494	3,390	65.8	9.7	-7.1
Greenville	294,257	460	1,807	1,551	3,358	87.6	7.3	-14.8
Georgetown	399,638	624	1,667	1,524	3,191	125.2	5.1	20.1
Lexington	280,742	439	2,026	1,140	3,166	88.7	7.2	-8.2
McCormick	212,021	331	1,832	1,332	3,164	67.0	9.6	155.4
Calhoun	190,584	298	1,695	1,454	3,149	60.5	10.6	22.5
Cherokee	156,664	245	1,875	1,151	3,026	51.8	12.4	3.8
Lee	220,106	344	1,638	1,338	2,976	74.0	8.7	12.7
Jasper	309,889	484	1,729	1,105	2,834	109.3	5.9	-18.4
Clarendon	298,087	466	1,657	1,170	2,827	105.4	6.1	-24.0
Pickens	219,926	344	1,733	1,004	2,737	80.4	8.0	2.2
Darlington	286,228	447	1,567	853	2,420	118.3	5.4	-10.9
Marlboro	281,271	439	1,277	805	2,082	135.1	4.7	-20.9
Oconee	284,348	444	1,290	745	2,035	139.7	4.6	-6.7
Beaufort	147,441	230	763	875	1,638	90.0	7.1	-42.3
Marion	216,907	339	830	467	1,297	167.2	3.8	-43.1
Dillon	214,069	334	508	457	965	221.8	2.9	-28.4
Total	14,028,896	21,920	107,212	90,681	197,893	81.1	9.3	

* Acreage shown represents the acreage of forested land and acreage of row crops considered to be significant deer habitat within each county.

Table 4. Estimated deer harvest on Wildlife Management Areas in South Carolina in 2020.

Area	Acres	Bucks	Does	Total	Deer/Mi. ²
Mountain Hunt Unit	193,566	1,156	707	1,863	6.2
Central Piedmont Hunt Unit	159,793	1,437	1,229	2,666	10.7
Western Piedmont Hunt Unit	119,077	1,018	779	1,797	9.7
Subtotal for Upstate WMA's	472,436	3,611	2,715	6,326	8.6
Coastal WMA's*					
Bear Island WMA	1,519	7	5	12	5.1
Bonneau Ferry WMA ¹	10,697	40	59	108	6.5
Botany Bay WMA	2,000	25	27	52	16.6
Crackerneck WMA	10,470	40	34	74	4.5
Donnelley WMA	8,048	50	54	104	8.3
Francis Marion WMA	252,578	94	145	239	0.6
Hamilton Ridge	13,281	38	48	86	4.1
Liberty Hill WMA	7,876	17	6	23	1.9
McBee WMA	1,213	13	7	20	10.6
Manchester State Forest WMA	25,505	93	64	157	3.9
Moultrie WMA	9,480	7	7	14	0.9
Palachucola WMA	5,947	30	27	57	6.1
Wateree River WMA	3,674	6	8	14	2.4
Webb Wildlife Center WMA	5,866	42	39	81	8.8
Subtotal for Coastal WMA's	358,154	502	530	1,041	1.9
Total	830,590	4,113	3,245	7,367	5.7

*Check Station data. ¹ Total includes deer of unknown sex

Table 5. Hunter opinion (percent) regarding the number of deer in the area hunted most often in South Carolina in 2020 compared to previous years.

	Increasing	About the Same	Decreasing
Residents	16.1	60.5	23.4
Non-Residents	15.4	60.4	24.2
Overall	16.0	60.5	23.5

Table 6. Resident deer hunter and deer harvest statistics in South Carolina in 2020.

County	Number Hunters	Man/Days Hunted	Percent Success	Deer/Hunter	Days/Deer	Buck Harvest	Doe Harvest	Total Harvest
Abbeville	3,200	42,950	72	1.0	13.4	1,832	1,368	3,200
Aiken	3,919	66,191	73	1.1	15.2	2,342	2,018	4,360
Allendale	1,415	18,971	75	1.5	8.9	1,044	1,090	2,134
Anderson	4,151	63,964	78	1.4	10.9	2,945	2,899	5,844
Bamberg	2,226	35,367	81	1.8	8.7	2,087	1,971	4,059
Barnwell	1,763	26,299	75	1.7	8.9	1,415	1,554	2,969
Beaufort	1,090	12,013	64	1.4	7.7	742	812	1,554
Berkeley	4,012	52,853	67	1.4	9.1	3,201	2,597	5,798
Calhoun	2,110	36,760	73	1.5	11.9	1,693	1,391	3,084
Charleston	3,456	42,649	67	1.1	10.9	2,064	1,855	3,919
Cherokee	1,763	29,500	74	1.4	12.1	1,600	835	2,435
Chester	3,177	39,821	69	0.9	13.6	1,554	1,368	2,922
Chesterfield	2,203	36,272	67	1.5	10.9	1,995	1,345	3,340
Clarendon	1,902	27,065	77	1.4	10.5	1,531	1,044	2,574
Colleton	4,708	73,265	76	1.6	9.8	3,850	3,664	7,514
Darlington	1,948	31,472	74	1.2	13.8	1,461	812	2,273
Dillon	649	11,225	89	1.4	12.7	487	394	881
Dorchester	2,899	49,886	74	1.5	11.8	2,064	2,157	4,221
Edgefield	2,829	43,369	76	1.2	12.4	2,018	1,484	3,502
Fairfield	4,592	59,163	73	1.2	10.7	3,247	2,273	5,520
Florence	3,038	59,742	79	1.6	12.4	2,574	2,250	4,824
Georgetown	2,435	43,275	69	1.3	13.8	1,647	1,484	3,131
Greenville	3,224	45,873	67	1.0	13.8	1,786	1,531	3,317
Greenwood	3,131	47,148	67	1.2	12.7	1,925	1,786	3,711
Hampton	2,064	25,952	80	1.4	8.9	1,623	1,299	2,922
Horry	2,760	47,544	66	1.3	13.4	1,995	1,554	3,548
Jasper	1,484	17,394	73	1.3	8.9	1,160	789	1,948
Kershaw	3,456	65,100	75	1.5	12.5	3,038	2,157	5,195
Lancaster	2,597	45,874	68	1.3	14.1	1,995	1,252	3,247
Laurens	4,592	65,101	73	1.2	11.8	3,224	2,273	5,496
Lee	2,064	34,162	74	1.4	12.1	1,554	1,276	2,829
Lexington	3,316	44,089	68	0.9	14.2	1,995	1,113	3,108
McCormick	2,458	31,634	73	1.1	11.3	1,600	1,206	2,806
Marion	1,183	21,916	69	1.0	17.8	789	441	1,229
Marlboro	1,206	24,074	75	1.5	13.3	1,067	742	1,809
Newberry	4,546	54,384	66	1.1	11.2	2,736	2,111	4,847
Oconee	2,018	26,855	71	1.0	14.0	1,206	719	1,925
Orangeburg	6,772	100,632	78	1.7	8.6	5,960	5,728	11,689
Pickens	2,992	41,119	74	0.9	15.7	1,670	951	2,620
Richland	3,757	46,430	71	1.0	11.8	2,250	1,693	3,943
Saluda	3,177	52,946	69	1.2	13.4	1,948	2,018	3,966
Spartanburg	4,522	71,594	72	1.5	10.3	3,340	3,595	6,935
Sumter	2,853	36,853	72	1.2	10.9	1,763	1,623	3,386
Union	3,502	48,632	66	1.1	13.0	1,809	1,925	3,734
Williamsburg	3,850	61,085	78	1.7	9.2	2,829	3,804	6,633
York	3,664	53,132	73	1.4	10.4	2,806	2,319	5,125
Total	134,675	2,011,594	69	1.3	11.4	95,457	80,568	176,026
% Change from 2019	6.6	7.7	0.0	-7.0	3.6	2.8	3.8	3.3

Table 7. Nonresident deer hunter and deer harvest statistics in South Carolina in 2020.

County	Number Hunters	Man/Days Hunted	Percent Success	Deer/Hunter	Days/Deer	Buck Harvest	Doe Harvest	Total Harvest
Abbeville	169	1,266	75	1.1	6.7	63	127	190
Aiken	232	3,102	54	0.6	21.0	84	63	148
Allendale	1,329	13,146	68	1.3	7.7	971	739	1,709
Anderson	127	1,456	83	2.7	4.3	190	148	338
Bamberg	696	8,546	82	1.4	8.6	570	422	992
Barnwell	591	8,208	86	2.0	6.8	591	612	1,203
Beaufort	127	992	50	0.7	11.7	21	63	84
Berkeley	169	4,051	100	2.5	9.6	274	148	422
Calhoun	106	992	40	1.4	15.2	2	63	65
Charleston	106	1,203	80	1.6	7.0	106	67	173
Cherokee	359	5,486	71	1.6	9.3	274	317	591
Chester	844	11,648	73	1.3	10.4	591	528	1,118
Chesterfield	570	11,163	44	1.3	14.7	464	295	760
Clarendon	127	1,372	83	2.0	5.4	127	127	253
Colleton	612	11,204	72	1.6	11.3	422	570	992
Darlington	106	380	80	1.4	2.6	106	42	148
Dillon	63	1,182	100	1.3	14.0	21	63	84
Dorchester	63	1,393	67	1.7	13.2	84	21	105
Edgefield	253	2,722	58	0.9	11.7	169	63	232
Fairfield	802	9,221	78	1.2	9.3	696	295	992
Florence	190	1,329	55	1.1	6.3	84	127	211
Georgetown	63	527	33	1.0	8.6	21	40	62
Greenville	63	696	67	0.7	16.5	21	21	42
Greenwood	63	1,329	100	1.3	15.8	21	63	84
Hampton	2,026	29,204	71	1.9	7.4	1,836	2,089	3,925
Horry	106	760	40	0.8	9.0	42	42	84
Jasper	633	10,318	77	1.4	11.6	570	317	886
Kershaw	422	6,098	70	1.4	10.7	295	274	570
Lancaster	654	12,766	84	1.5	13.4	528	422	950
Laurens	338	4,136	81	1.3	9.8	169	253	422
Lee	106	359	100	1.4	2.4	84	63	148
Lexington	42	232	50	1.4	0.0	32	27	59
McCormick	380	4,262	55	0.9	11.9	232	127	359
Marion	42	253	100	1.6	0.0	42	27	69
Marlboro	295	3,756	71	0.9	13.7	211	63	274
Newberry	232	2,110	55	1.1	8.3	169	84	253
Oconee	42	211	100	2.6	0.0	84	27	111
Orangeburg	274	3,503	85	1.5	8.7	211	190	401
Pickens	84	253	25	1.4	2.1	64	54	118
Richland	190	1,435	67	1.4	5.2	106	169	274
Saluda	148	1,519	33	1.3	8.0	63	127	190
Spartanburg	148	591	86	1.3	3.1	148	42	190
Sumter	148	760	67	0.6	9.0	42	42	84
Union	591	8,313	59	1.2	11.6	359	359	717
Williamsburg	317	1,794	73	1.3	4.3	253	169	422
York	443	8,292	67	0.9	20.7	253	148	401
Total	15,488	203,539	70	1.5	9.3	11,767	10,139	21,906
% Change from 2019	4.3	4.6	4.5	-6.3	8.1	-5.0	-1.1	-3.3

Table 8. Hunting effort (man/days) by county for successful and unsuccessful resident and nonresident deer hunters in South Carolina in 2020.

County	Residents (man/days)			Total Effort Residents	Nonresidents (man/days)			Total Effort Non-residents	Total Days
	Successful	Unsuccessful	Average		Successful	Unsuccessful	Average		
Abbeville	15.4	8.3	13.4	42,950	5.2	14.5	7.5	1,266	44,216
Aiken	18.8	11.8	16.9	66,191	16.7	9.4	13.4	3,102	69,293
Allendale	15.5	7.1	13.4	18,971	11.7	6.0	9.9	13,146	32,117
Anderson	16.9	10.0	15.4	63,964	13.2	3.0	11.5	1,456	65,420
Bamberg	17.2	10.1	15.9	35,367	12.7	10.5	12.3	8,546	43,913
Barnwell	17.5	7.2	14.9	26,299	13.8	14.5	13.9	8,208	34,508
Beaufort	13.1	7.4	11.0	12,013	6.7	9.0	7.8	992	13,005
Berkeley	15.9	7.6	13.2	52,853	24.0	0.0	24.0	4,051	56,904
Calhoun	19.8	11.2	17.4	36,760	19.0	3.0	9.4	992	37,752
Charleston	15.5	5.9	12.3	42,649	13.5	3.0	11.4	1,203	43,852
Cherokee	18.8	11.1	16.7	29,500	18.3	8.0	15.3	5,486	34,986
Chester	14.3	8.7	12.5	39,821	13.9	13.5	13.8	11,648	51,469
Chesterfield	19.8	9.5	16.5	36,272	26.4	14.1	19.6	11,163	47,434
Clarendon	16.8	5.7	14.2	27,065	12.4	3.0	10.8	1,372	28,437
Colleton	17.9	8.1	15.6	73,265	19.3	15.8	18.3	11,204	84,469
Darlington	18.7	9.0	16.2	31,472	3.8	3.0	3.6	380	31,852
Dillon	18.3	9.0	17.3	11,225	18.7	0.0	18.7	1,182	12,407
Dorchester	20.8	6.9	17.2	49,886	32.0	2.0	22.0	1,393	51,278
Edgefield	16.8	11.1	15.3	43,369	13.1	7.4	10.8	2,722	46,091
Fairfield	14.5	8.5	12.9	59,163	12.7	7.8	11.5	9,221	68,384
Florence	21.1	13.7	19.7	59,742	10.8	2.3	7.0	1,329	61,071
Georgetown	20.3	12.2	17.8	43,275	20.0	2.5	8.3	527	43,802
Greenville	17.3	8.0	14.2	45,873	13.5	6.0	11.0	696	46,569
Greenwood	16.5	12.1	15.1	47,148	21.0	0.0	21.0	1,329	48,478
Hampton	13.0	10.8	12.6	25,952	18.5	4.5	14.4	29,204	55,156
Horry	22.1	7.9	17.2	47,544	15.0	2.0	7.2	760	48,303
Jasper	13.0	8.1	11.7	17,394	18.2	10.0	16.3	10,318	27,713
Kershaw	21.5	10.9	18.8	65,100	18.2	5.7	14.5	6,098	71,198
Lancaster	20.2	12.5	17.7	45,874	20.5	14.2	19.5	12,766	58,640
Laurens	15.9	9.7	14.2	65,101	13.5	6.7	12.3	4,136	69,236
Lee	19.2	9.0	16.6	34,162	3.4	0.0	3.4	359	34,521
Lexington	15.6	8.3	13.3	44,089	10.0	1.0	5.5	232	44,321
McCormick	14.6	8.4	12.9	31,634	14.5	7.1	11.2	4,262	35,896
Marion	20.1	15.1	18.5	21,916	6.0	0.0	6.0	253	22,169
Marlboro	23.5	9.2	20.0	24,074	15.7	5.3	12.7	3,756	27,830
Newberry	13.7	8.6	12.0	54,384	10.0	8.0	9.1	2,110	56,494
Oconee	15.2	8.7	13.3	26,855	5.0	0.0	5.0	211	27,066
Orangeburg	17.7	6.0	14.9	100,632	12.3	15.5	12.8	3,503	104,135
Pickens	15.1	9.9	13.7	41,119	2.0	3.3	3.0	253	41,372
Richland	13.9	8.7	12.4	46,430	10.0	2.7	7.6	1,435	47,865
Saluda	18.6	12.3	16.7	52,946	10.0	12.0	10.3	1,519	54,466
Spartanburg	18.0	10.1	15.8	71,594	3.7	6.0	4.0	591	72,185
Sumter	14.6	8.6	12.9	36,853	7.0	2.7	5.1	760	37,612
Union	16.1	9.7	13.9	48,632	15.0	12.8	14.1	8,313	56,945
Williamsburg	18.2	7.4	15.9	61,085	6.7	2.8	5.7	1,794	62,879
York	15.4	12.0	14.5	53,132	21.0	14.1	18.7	8,292	61,425
Total	17.1	9.2	14.9	2,011,594	15.0	8.4	13.1	203,539	2,215,133
% Change from 2019	0.0	0.0	0.0	7.7	0.0	0.0	0.0	4.6	7.4

Table 9. Estimated deer harvest by weapon type in South Carolina in 2020.

	Rifle	Bow & Arrow	Shotgun	Muzzle-loader	Crossbow	Handgun	Total
Number of Deer Harvested	161,085	11,676	15,040	4,749	5,145	198	197,893
Percent Total Deer Harvest	81.4	5.9	7.6	2.4	2.6	0.1	100.0
Percent Hunter Success With Weapon	66.2	31.4	34.0	28.6	25.2	13.0	NA*

* Total is not applicable because individual hunters take deer with multiple weapons.

Table 10. Number of hunters using each type of weapon in South Carolina in 2020.

	Rifle	Bow & Arrow	Shotgun	Muzzle-loader	Crossbow	Handgun
Residents	123,632	25,588	24,107	13,198	16,296	3,232
Nonresidents	14,512	1,781	1,100	2,060	1,704	263
Total	138,144	27,369	25,206	15,258	17,999	3,495

Total across weapons not given because hunters use multiple weapons. Total hunters = 150,163.

Table 11. Weapons utilization (percent) among deer hunters in South Carolina in 2020.

	Rifle	Bow & Arrow	Shotgun	Muzzle-loader	Crossbow	Handgun
Residents	91.8	19.0*	17.9*	9.8*	12.1	2.4
Nonresidents	93.7	11.5	7.1	13.3	11.0	1.7
Total	92.0	18.0	16.5	10.3	11.9	2.3

* Significant difference in weapons use category based on residency.

Table 12. Weapons preference (percent) among deer hunters in South Carolina in 2020.

	Rifle	Bow & Arrow	Shotgun	Muzzle-loader	Crossbow	Handgun	Total
Residents	80.5	10.5*	5.6*	0.8*	2.4	0.3	100.0
Nonresidents	85.7	7.5	1.9	2.7	1.9	0.3	100.0
Total	81.2	10.1	5.1	1.0	2.3	0.3	100.0

* Significant difference in weapons preference category based on residency.

Table 13. Estimated wild hog and coyote harvest by deer hunters in South Carolina in 2020.
Rank is by per unit area harvested.

County	Hog Harv.	Harv./ Mile ²	% Change from 2019	2020 Rank	2019 Rank	Coyote Harv.	Harv./ Mile ²	% Change from 2019	2020 Rank	2019 Rank
Abbeville	1,686	4.84	30.4	1	2	808	2.32	150.0	2	23
Aiken	1,132	1.45	53.1	14	27	785	1.00	13.3	17	24
Allendale	1,409	4.17	15.1	2	3	162	0.48	-41.7	35	27
Anderson	601	1.75	-62.3	12	1	855	2.50	27.6	1	3
Bamberg	716	2.33	19.2	7	13	208	0.68	-50.0	26	9
Barnwell	785	1.78	41.7	11	20	300	0.68	0.0	26	34
Beaufort	46	0.20	0.0	41	43	46	0.20	-60.0	44	37
Berkeley	1,016	1.15	-62.7	20	6	924	1.04	42.9	15	30
Calhoun	277	0.93	-7.7	29	24	139	0.47	-71.4	37	5
Charleston	370	0.82	-68.0	30	9	231	0.51	66.7	32	45
Cherokee	69	0.28	50.0	38	44	370	1.51	60.0	9	21
Chester	670	1.43	81.3	15	30	416	0.89	-50.0	19	4
Chesterfield	393	0.67	30.8	34	37	670	1.15	-19.4	12	7
Clarendon	439	0.94	90.0	27	38	346	0.74	7.1	23	33
Colleton	1,063	1.35	12.2	16	21	393	0.50	54.5	33	44
Darlington	323	0.72	-26.3	33	25	208	0.46	-65.4	38	10
Dillon	69	0.21	-89.3	40	14	46	0.14	-60.0	46	43
Dorchester	531	1.12	-17.9	22	19	347	0.73	15.4	24	35
Edgefield	370	0.96	77.8	26	36	346	0.90	15.4	18	28
Fairfield	1,409	2.34	154.2	6	28	624	1.04	42.1	15	30
Florence	508	0.82	-52.2	30	15	485	0.78	0.0	21	28
Georgetown	993	1.59	38.7	13	22	92	0.15	-60.0	45	42
Greenville	0	0.00	-100.0	45	41	346	0.75	-11.8	22	25
Greenwood	300	0.94	44.4	27	33	716	2.24	138.5	3	21
Hampton	1,756	3.46	10.1	3	5	277	0.55	0.0	30	36
Horry	993	1.19	22.9	18	26	347	0.42	7.1	39	41
Jasper	993	2.05	0.0	10	11	116	0.24	-44.4	43	39
Kershaw	601	1.07	-31.6	23	17	185	0.33	-71.4	41	13
Lancaster	116	0.28	25.0	38	42	462	1.11	-16.7	13	12
Laurens	393	0.79	13.3	32	32	762	1.53	-31.3	8	2
Lee	0	0.00	-100.0	45	34	508	1.48	46.7	10	18
Lexington	185	0.42	240.0	36	45	277	0.63	-25.0	28	26
McCormick	1,132	3.42	14.0	4	8	346	1.05	7.1	14	20
Marion	785	2.32	13.3	8	12	116	0.34	400.0	40	46
Marlboro	554	1.26	20.0	17	23	139	0.32	-25.0	42	40
Newberry	185	0.37	-38.5	37	34	439	0.88	-38.7	20	6
Oconee	439	0.99	-36.7	25	17	231	0.52	-52.4	31	16
Orangeburg	23	0.03	-88.9	44	40	393	0.50	-29.2	33	32
Pickens	393	1.14	-29.2	21	16	577	1.68	56.3	7	17
Richland	1,317	2.48	-25.0	5	4	254	0.48	0.0	35	38
Saluda	300	1.00	225.0	24	39	601	2.00	44.4	5	8
Spartanburg	23	0.06	-92.9	42	30	855	2.06	-36.2	4	1
Sumter	624	1.18	-61.4	19	7	370	0.70	-30.4	25	19
Union	185	0.46	-42.9	35	29	739	1.83	60.0	6	13
Williamsburg	1,848	2.30	3.9	9	10	485	0.60	-46.2	29	15
York	23	0.05	0.0	43	46	577	1.34	0.0	11	10
Total	28,043	1.28	-20.0	NA	NA	18,919	0.86	-9.1	NA	NA
	(+ -) 1,915					(+ -) 1,157				

95% Confidence Interval for harvest

Ranking is based on harvest per square mile

Table 14. Number of deer-vehicle collisions reported by the South Carolina Department of Public Safety 2016-2020.

County	2016	2017	2018	2019*	2020*
Abbeville	8	7	7	8	4
Aiken	88	79	78	93	91
Allendale	10	12	7	19	10
Anderson	81	63	100	97	67
Bamberg	13	16	24	27	21
Barnwell	15	16	22	15	21
Beaufort	114	106	110	130	135
Berkeley	63	77	90	115	108
Calhoun	46	41	27	31	24
Charleston	215	216	252	248	249
Cherokee	15	19	22	41	31
Chester	33	24	36	48	46
Chesterfield	33	27	36	37	48
Clarendon	19	20	13	19	16
Colleton	53	73	60	51	38
Darlington	86	100	86	133	106
Dillon	53	71	63	71	74
Dorchester	60	55	63	60	54
Edgefield	10	4	8	11	2
Fairfield	29	24	28	33	26
Florence	107	137	186	176	136
Georgetown	31	61	29	31	32
Greenville	108	138	149	162	130
Greenwood	21	13	15	19	17
Hampton	12	18	14	18	17
Horry	196	251	313	340	286
Jasper	52	64	60	64	62
Kershaw	32	24	40	37	33
Lancaster	33	37	45	40	45
Laurens	16	20	18	14	19
Lee	19	18	32	15	14
Lexington	36	30	34	33	30
McCormick	2	3	2	0	0
Marion	43	62	68	63	44
Marlboro	50	80	73	85	76
Newberry	8	14	16	13	6
Oconee	4	13	17	26	11
Orangeburg	140	145	130	148	132
Pickens	28	37	28	50	34
Richland	79	69	55	54	58
Saluda	6	7	8	5	2
Spartanburg	156	145	151	169	141
Sumter	23	26	18	25	20
Union	19	13	14	20	17
Williamsburg	85	102	75	85	68
York	110	119	117	107	104
Total	2,460	2,696	2,839	3,086	2,705

* Preliminary figures

Table 15. Average live body weights of deer from South Carolina counties, based on historic data

COUNTY	Males				Females			
	1.5 Years Old		2.5+ Years Old		1.5 Years Old		2.5+ Years Old	
	N	Avg. Wt.	N	Avg. Wt.	N	Avg. Wt.	N	Avg. Wt.
Abbeville	1,390	111.7	484	145.9	466	90.4	747	102.7
Aiken	2,667	121.6	1,485	162.6	808	94.9	1,522	109.6
Allendale	6,175	108.9	3,333	146.0	2,503	87.7	5,606	100.8
Anderson	30	121.9	17	148.1	4	92.5	8	113.0
Bamberg	2,414	111.9	1,113	142.4	884	91.4	1,721	103.9
Barnwell	1,478	119.1	695	156.6	601	94.3	1,071	106.9
Beaufort	952	101.6	1,236	135.2	690	86.7	1,818	99.8
Berkeley	3,162	100.6	4,198	127.3	1,086	83.4	3,991	97.2
Calhoun	1,588	110.2	633	144.1	312	91.4	943	104.6
Charleston	1,256	97.9	2,088	123.3	422	83.3	1,581	95.8
Cherokee	1	80.0	1	139.0	9	77.8	26	89.6
Chester	1,445	105.9	963	140.1	470	87.4	1,091	99.4
Chesterfield	79	119.4	140	152.5	27	93.5	1,128	99.8
Clarendon	13	101.3	29	152.5	42	89.6	87	103.0
Colleton	5,822	105.6	6,908	135.5	3,279	87.9	8,920	100.4
Darlington	334	113.6	273	153.3	216	92.8	573	105.2
Dillon	74	112.8	46	138.5	13	92.8	50	103.9
Dorchester	1,868	107.2	2,205	137.0	653	88.0	2,055	103.0
Edgefield	556	100.9	334	133.4	159	84.6	306	96.9
Fairfield	2,048	102.1	1,444	136.5	761	86.3	2,021	99.2
Florence	696	110.8	459	139.2	198	89.6	621	102.8
Georgetown	1,881	98.7	2,281	126.1	668	85.6	1,961	97.6
Greenville	7	122.1	9	149.9	7	79.3	16	98.4
Greenwood	1,158	111.4	537	145.1	313	90.2	629	103.0
Hampton	6,103	106.7	4,710	140.0	3,034	87.2	7,236	100.5
Horry	302	96.1	311	126.1	129	79.2	301	91.3
Jasper	3,385	101.8	4,691	135.4	2,142	84.6	5,948	96.9
Kershaw	603	108.9	588	144.6	251	89.6	758	102.9
Lancaster	472	113.1	246	153.3	213	91.4	441	105.2
Laurens	240	104.7	181	132.9	107	87.3	238	96.9
Lee	472	119.6	187	151.3	162	96.6	330	108.5
Lexington	20	120.8	9	164.8	6	101.3	15	115.8
McCormick	2,354	101.5	1,056	134.5	877	85.3	1,745	97.3
Marion	690	108.5	501	138.7	256	88.6	630	98.7
Marlboro	106	115.0	62	149.8	30	95.0	70	107.8
Newberry	143	97.1	100	135.6	85	86.0	171	92.7
Oconee	74	113.1	58	152.6	33	85.3	39	99.6
Orangeburg	2,293	112.5	1,375	145.0	686	90.8	1,684	103.4
Pickens	47	109.1	41	145.4	18	79.9	48	100.5
Richland	1,320	106.1	1,274	145.2	651	92.7	1,879	106.3
Saluda	100	115.8	40	148.0	25	93.6	34	105.2
Spartanburg	34	109.3	22	142.2	13	95.0	31	98.8
Sumter	666	111.3	353	142.1	188	94.4	509	105.3
Union	958	101.7	608	135.8	439	87.9	761	97.8
Williamsburg	469	112.5	559	143.3	150	91.4	478	106.0
York	13	96.9	30	143.9	20	78.7	41	93.9
Total	57,958	107.3	47,913	137.9	24,106	88.0	61,879	100.6

Table 16. Antler characteristics of male deer from South Carolina counties, based on historic data

COUNTY	1.5 Years Old Males			2.5+ Years Old Males			% 1.5 Bucks in Antlered Harvest
	Number Points	Percent Spikes	Outside Spread	Number Points	Percent Spikes	Outside Spread	
Abbeville	4.2	32		7.2	2		74
Aiken	4.4	28	8.7	7.4	1	14.7	64
Allendale	4.0	36	7.7	7.2	3	13.7	65
Anderson	4.7	28		6.8	0		63
Bamberg	4.0	34	7.6	6.7	4	12.5	68
Barnwell	4.6	21	8.7	7.1	2	13.9	68
Beaufort	3.1	58	7.4	6.4	9	13.0	44
Berkeley	3.0	62	6.6	5.8	12	11.5	43
Calhoun	4.0	33	7.4	7.0	3	13.2	72
Charleston	2.8	69	6.2	5.4	15	10.6	38
Cherokee				7.0	0		50
Chester	3.4	47	8.7	6.7	4	13.9	61
Chesterfield	4.5	21	8.6	7.2			61
Clarendon	2.8	58	6.2	7.7	3	12.9	31
Colleton	3.3	50	6.9	6.4	7	11.7	46
Darlington	3.1	57	7.4	6.7	5	13.7	55
Dillon	3.2	54	8.1	5.7	9	11.6	62
Dorchester	3.3	53	6.6	6.0	9	11.1	46
Edgefield	3.3	50		6.6	5		63
Fairfield	3.1	55	7.5	6.4	6	13.8	59
Florence	3.4	47	7.4	6.1	9	12.1	60
Georgetown	2.8	65	6.6	5.6	13	11.0	45
Greenville	4.7	14		7.6	0		44
Greenwood	3.9	34		6.7	3		68
Hampton	3.9	39	7.7	6.9	4	13.0	56
Horry	3.0	58	6.8	6.2	8	12.1	49
Jasper	3.3	52	7.0	6.6	6	12.8	42
Kershaw	3.6	47	7.7	6.9	7	12.3	51
Lancaster	4.3	27	6.7	7.4	0	15.0	66
Laurens	3.2	53	6.7	6.0	10	13.7	57
Lee	4.3	25	8.4	6.7	2	12.9	72
Lexington	4.1	30	9.1	7.3	0	15.7	69
McCormick	3.5	47		6.8	4		69
Marion	3.3	52	7.3	6.2	10	12.4	58
Marlboro	3.1	53	7.0	6.4	10	12.6	63
Newberry	2.8	54		6.3	8	13.3	59
Oconee	3.4	52		7.3	3		56
Orangeburg	3.8	38	7.6	6.8	5	12.6	63
Pickens	4.0	43		7.2	2		53
Richland	3.3	52	7.3	6.8	5	13.5	51
Saluda	4.0	32	9.0	6.9	0	10.8	71
Spartanburg	4.0	33	6.1	7.1	0		61
Sumter	3.7	41	7.7	6.6	5	12.5	65
Union	3.3	51	7.2	6.6	5	13.6	61
Williamsburg	3.6	43	7.6	6.8	5	12.6	46
York	3.1	60	5.3	7.4	0	13.3	30
Total	3.6	44	7.4	6.5	7	12.4	55

Figure 1. South Carolina Department of Natural Resources 2020 Deer Hunter Survey

2020 South Carolina Deer Hunter Survey

1. Did you hunt deer in SC this past season (2020)? **1. Yes** **2. No**
If you answered **No** to this question please **go to question # 9.**
2. Did you harvest any deer in SC this past season? **1. Yes** **2. No**
3. Even if you did not harvest any deer, please record the SC counties you deer hunted and the number of days hunted in each county this past season (2020). Please begin with the county you hunted the most. If you harvested deer please record the number of bucks and does taken in each county. A day of hunting is defined as any portion of the day spent afield. Please do not give ranges (i.e. 5-10), rather provide absolute numbers (i.e. 5). Provide information only for yourself - not friends, relatives, or other hunt club members.

Counties You Deer Hunted	# Days Hunted	Number Deer Harvested	
		# Bucks	#Does
1		# Bucks	#Does
2		# Bucks	#Does
3		# Bucks	#Does
4		# Bucks	#Does

If you did not harvest any deer in SC in 2020 please go to question # 6.

4. Please record the number of deer taken by month of season in SC last season (2020).

August	September	October	November	December	January

5. Please record the number of deer taken with each weapon in SC last season (2020).

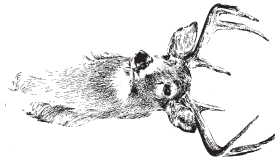
Rifle	Bow	Shotgun	Muzzleloader	Crossbow	Handgun

6. Please circle **all** the weapons that you hunted deer with in 2020.
1. Rifle 2. Bow 3. Shotgun 4. Muzzleloader 5. Crossbow 6. Handgun
7. Please circle the **one** weapon that you **prefer to hunt deer with.**
1. Rifle 2. Bow 3. Shotgun 4. Muzzleloader 5. Crossbow 6. Handgun
8. Compared to past years, how would you describe the number of deer in the area that you hunt most often? **Circle one**
1. Increasing 2. About the same 3. Decreasing
9. If you **harvested** any wild hogs or coyotes while hunting in SC in 2020, please complete the box below.
If you did not harvest any hogs or coyotes please **go to question # 10.**

County	# Hogs	County	# Coyotes
1		1	
2		2	
3		3	

10. Are you a resident of SC? **1. Yes** **2. No**
11. If yes, which county _____

Separate and return this portion of the survey. Postage is prepaid. Please do not staple this form.



**Help Manage
SC's Deer Herd
COMPLETE YOUR
HUNTER
SURVEY**



DEER HUNTER SURVEY
 SCDNR
 PO BOX 167
 COLUMBIA SC 29202-0167
 www.dnr.sc.gov

PRESORTED
 FIRST CLASS
 US POSTAGE
 PAID
 COLUMBIA SC
 PERMIT 1371

Figure 1 Cont.

January, 2020

Dear Sportsman:

White-tailed deer are one of the most important game species in South Carolina. Therefore, it is important that this species be monitored for population status and harvesting activities. Wildlife resource managers require current and accurate information about deer harvests to aid in successfully managing this important natural resource and to optimize future hunting potential. To obtain this needed data, the Department of Natural Resources (DNR) is conducting a survey of licensed Big Game Permit holders.

You are one of a group of randomly selected hunters asked to participate in this survey. To draw accurate conclusions it is very important that you complete the survey and return it. Please take time to read each question. Even if you did not hunt deer last season please indicate this by answering the appropriate questions and moving on to the next set of questions.

In addition to the questions concerning your deer hunting activities, there are questions concerning the weapons that you used to harvest deer and questions concerning the number of wild hogs and coyotes that you may have harvested. Not only is this data important to DNR game biologists, many hunters are interested in this type of information so it is important that you answer these questions too.

Please note that complete confidentiality will be given to you. There is no number on your survey form, therefore, there is no way to link your responses to you. Keep in mind that the primary purpose of the survey is to determine the deer harvest in South Carolina and not to determine whether game laws are observed. By accurately answering the survey questions you will enable DNR biologists to better manage the white-tailed deer resource for you and other citizens of the state.

Please keep in mind that in order to reduce costs, this is the only 2020 Deer Hunter Survey form you will receive. There will be no reminders or second surveys sent to individuals that do not respond to this initial survey. Therefore, it is very important that you take a few minutes to complete this survey and mail it. Return postage is prepaid.

Results of this survey will be posted on the DNR web site once completed (hopefully by June). The results from the 2019 survey can be found at www.dnr.sc.gov/wildlife/deer/2019/DeerHarvestReport.html

Thank you for your assistance.

Charles Ruth
Wildlife Biologist
Big Game Program Coordinator

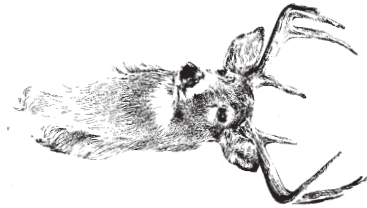
PLEASE MAIL YOUR SURVEY AFTER SEPARATING THIS HALF FROM THE SIDE ON WHICH YOUR ANSWERS HAVE BEEN ENTERED. NO POSTAGE IS NECESSARY.

If you have questions regarding this survey, please call 803-734-3886 or write 2020 Deer Hunter Survey, SCDNR, P.O. Box 167, Columbia, SC 29202.

The South Carolina Department of Natural Resources prohibits discrimination on the basis of race, color, gender, national origin, disability, religion or age. Direct all inquiries to the Office of Human Resources, P.O. Box 167, Columbia, SC 29202

20-12720

Printed on Recycled Paper



**DEER HUNTER SURVEY
SC DEPARTMENT OF NATURAL RESOURCES
PO BOX 167
COLUMBIA SC 29202-9976**

BUSINESS REPLY MAIL
FIRST CLASS MAIL PERMIT NO 1371 COLUMBIA SC
POSTAGE WILL BE PAID BY ADDRESSEE



**NO POSTAGE
NECESSARY
IF MAILED
IN THE
UNITED STATES**

Figure 2. Percent of deer harvested by month of season in South Carolina in 2020. Note that December includes January 1 which is the last day of deer season.

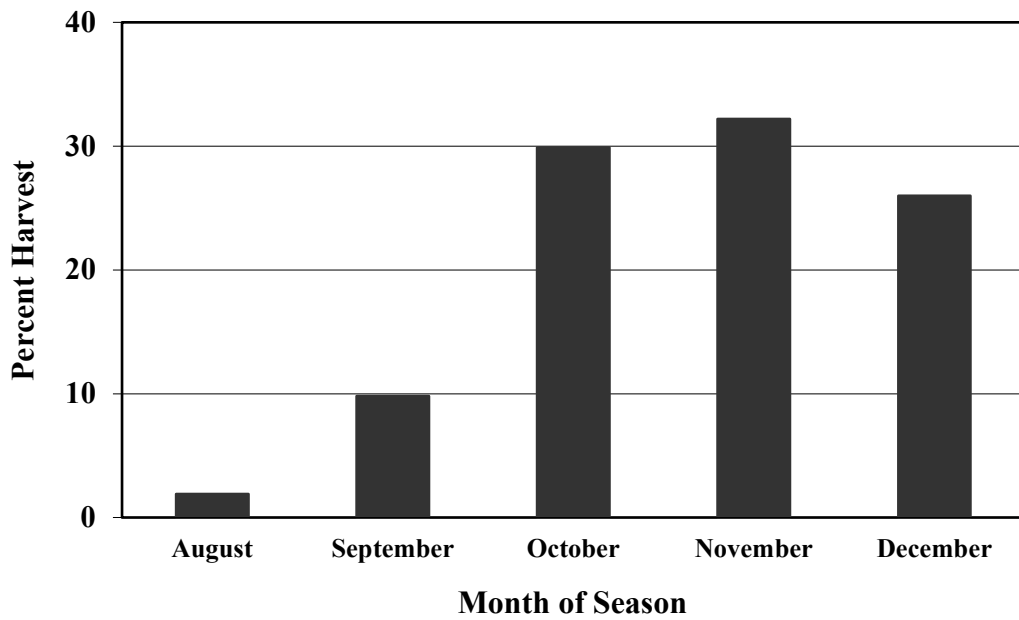


Figure 3. Percent of female deer conceiving by week in South Carolina, based on historic data.

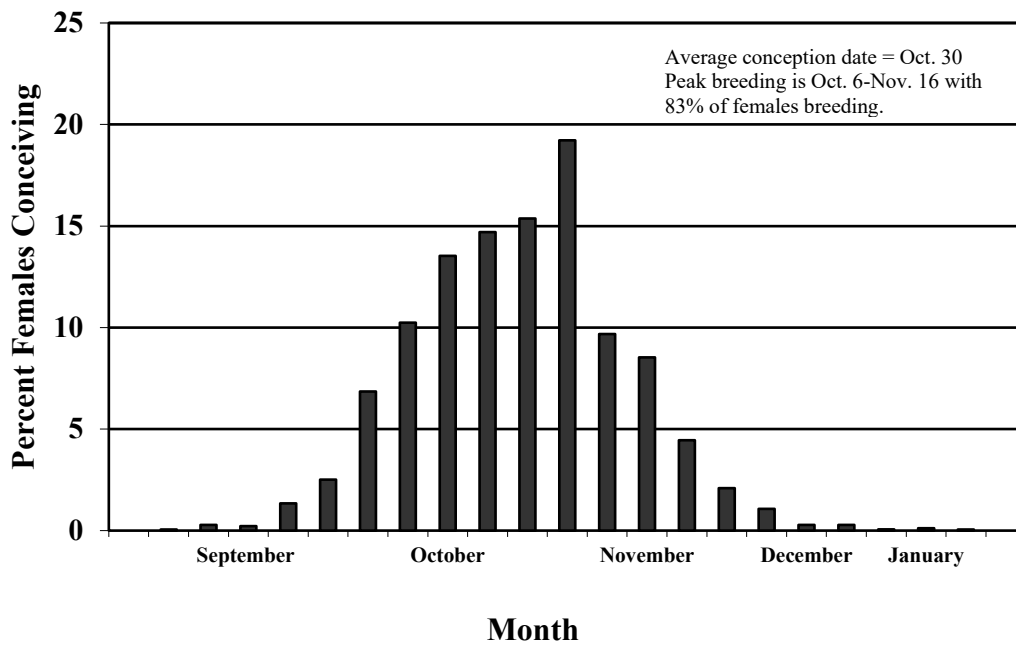


Figure 4. Estimated deer harvest in South Carolina 1972-2020.

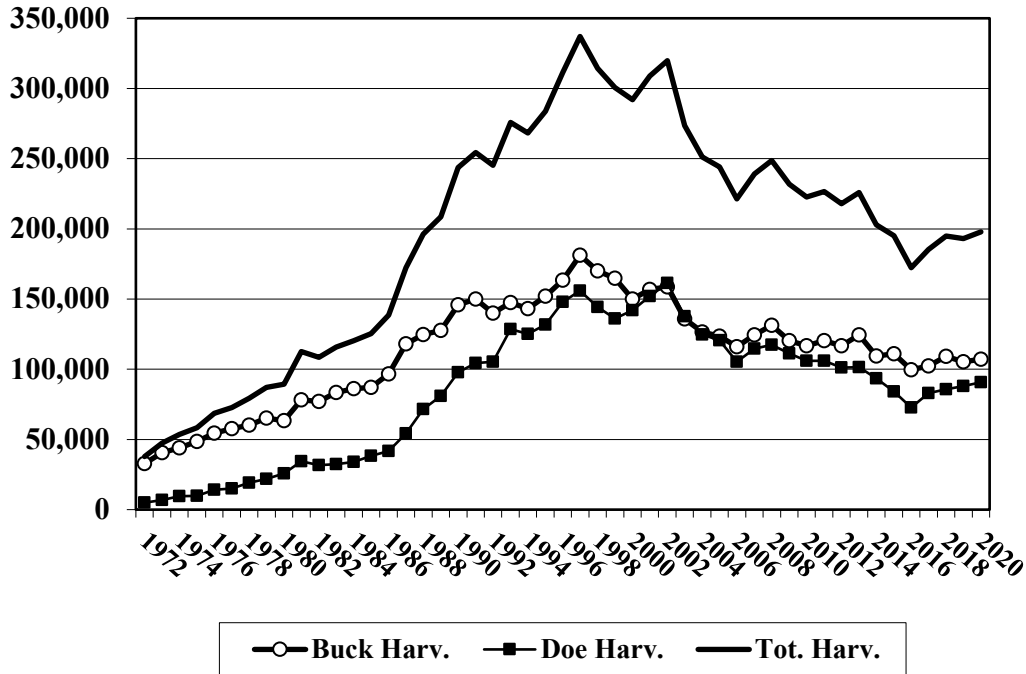


Figure 5. Estimated South Carolina deer population 1972-2020 based on population reconstruction modeling. Note that antlerless deer includes male fawns (button bucks).

