

Figure 1. Percent of deer harvested by month of season in South Carolina in 2024. Note that December includes January 1 which is the last day of deer season.

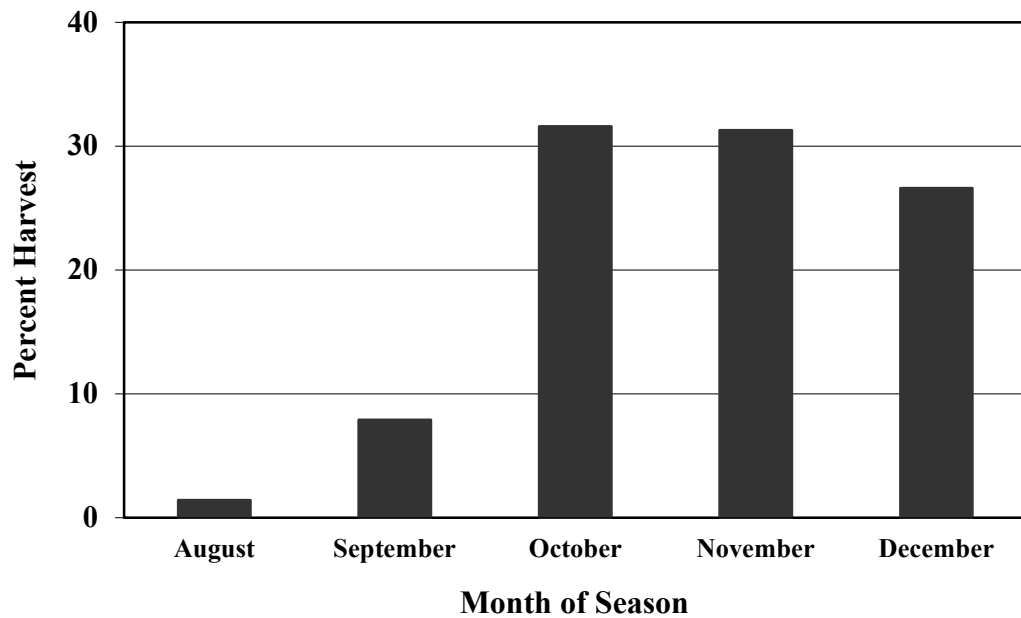


Figure 2. Percent of female deer conceiving by week in South Carolina, based on historic data.

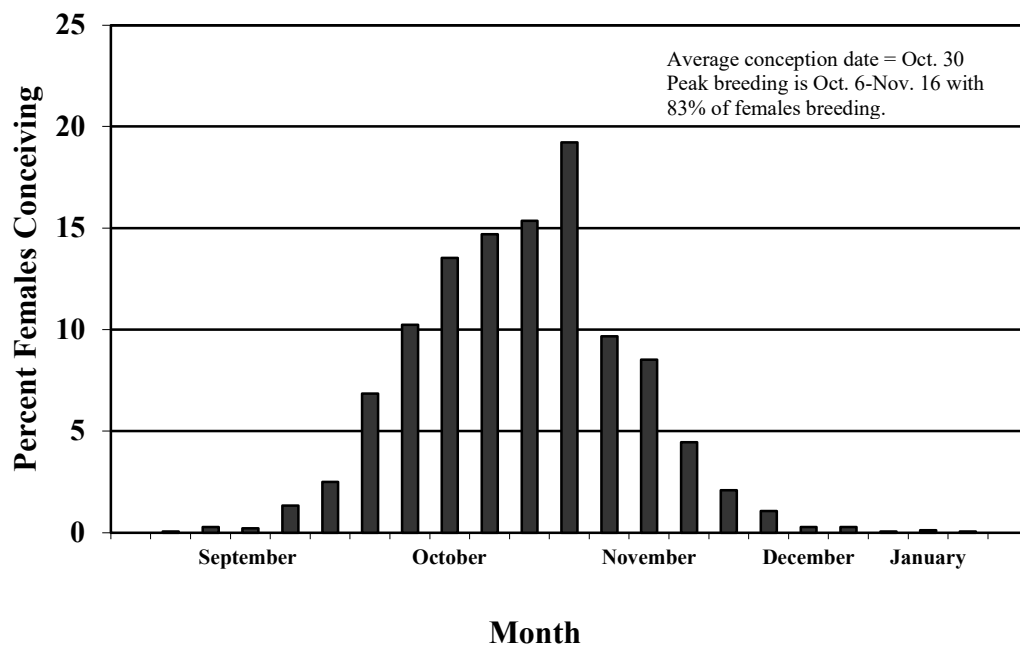


Figure 3. Estimated deer harvest in South Carolina 1972-2024.

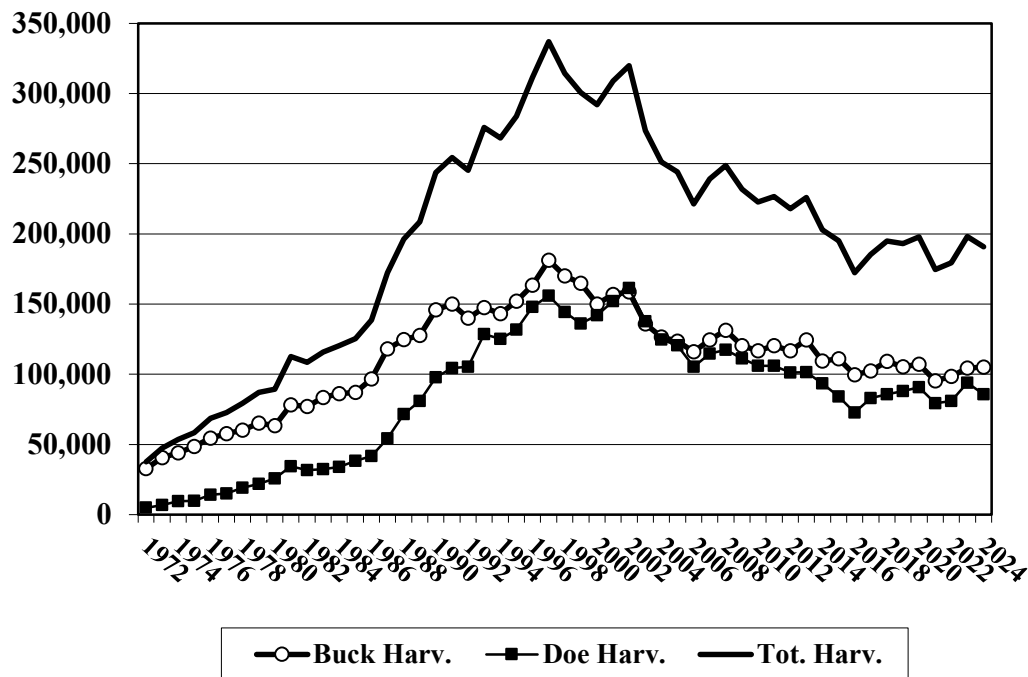


Figure 4. Estimated South Carolina deer population 1972-2024 based on population reconstruction modeling. Note that antlerless deer includes male fawns (button bucks).

